

Preparing the phone

**Congratulations** on your purchase of the Sony Ericsson T303a. For additional phone content, go to [www.sonyericsson.com/fun](http://www.sonyericsson.com/fun). Register now to get free online storage and special offers at [www.sonyericsson.com/myphone](http://www.sonyericsson.com/myphone). For product support, go to [www.sonyericsson.com/support](http://www.sonyericsson.com/support).

Instruction symbols

The following instruction symbols appear in this User guide:

- Use a navigation key or a selection key to scroll and select.

- Press the center selection key.
- ⬅ Press the navigation key to the left.
- ➡ Press the navigation key to the right.
- ⬆ Press the navigation key up.
- ⬇ Press the navigation key down.

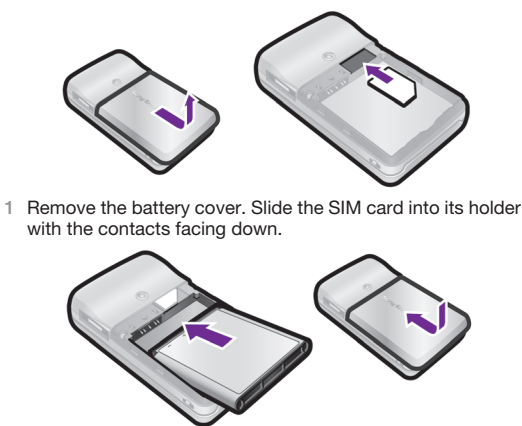
! Note

💡 Tip

⚠ Warning

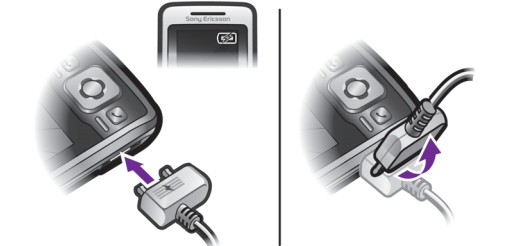
📶 Indicates that a service or function is network- or subscription-dependent. All menus or functions may not be available in your phone. Consult your network operator for more information.

To insert the SIM card and battery



! Do not force the battery cover into place. Slide the battery cover carefully onto the phone and close it.

To charge the battery



- The phone battery is partly charged when you buy it. Connect the charger to the phone. It takes approximately 2.5 hours to fully charge the battery. Press a key to illuminate the screen.
- To remove the charger, tilt the plug upwards.

! You can use the phone during charging. You can charge the battery for more or less than 2.5 hours. Interrupted charging will not damage the battery.

To turn on the phone

- Press and hold down **[Power]**.
- Enter your PIN if requested. To correct mistakes, press **[C]**.
- Select **OK**.
- Select a language.
- Enter the time and date and select **Save**.

To turn off the phone

- Press and hold down **[Power]**.

Standby

After you have turned on the phone and entered your PIN, the name of your operator appears on the screen. This is called standby. You can now make and receive calls.

SIM and PIN

SIM card

The SIM (Subscriber Identity Module) card, which you get from your network operator, contains information about your subscription. Always turn off your phone and detach the charger and remove the battery before you insert or remove the SIM card.

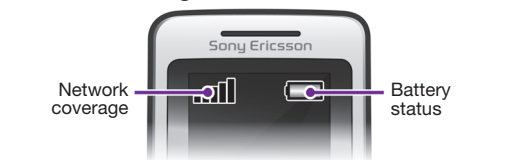
💡 You can save contacts on the SIM card before removing it from your phone. Contacts may also be saved in the phone memory. See [Contacts](#) on page 17.

PIN code

You may need a PIN (Personal Identification Number) to activate the services in your phone. Your PIN is supplied by your network operator. Each PIN digit appears as \*, unless it starts with emergency number digits, for example, 112 or 911. You can call an emergency number without entering a PIN.

! If you enter the wrong PIN three times in a row, **PIN blocked**. To unblock, enter your **PUK code provided by your service provider**. appears. To unblock it, you need to enter your **PUK (Personal Unblocking Key)**.

Network coverage



The network bars show the strength of the GSM network in your area. Try moving to another location if you have trouble calling and network coverage is poor. **No net. coverage** means you are not in range of a network.

📶 = Good network coverage

📶 = Average network coverage

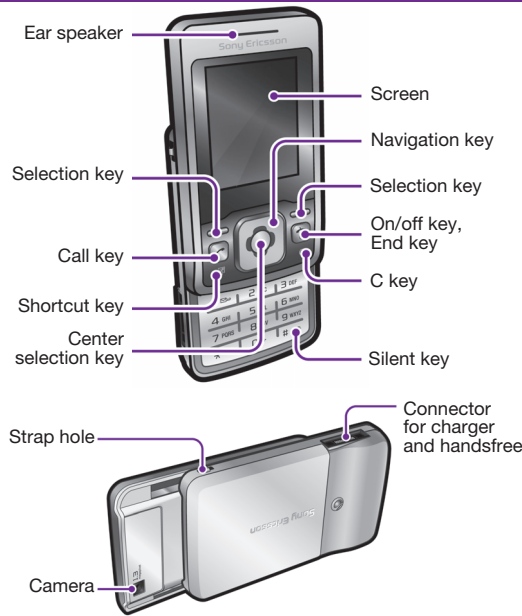
Battery status

🔋 = The phone battery is fully charged

🔋 = The phone battery is empty

🔋 = The phone battery is being charged

Phone overview



Menu overview

	<b>Organizer</b>	File manager, Alarms, Calendar, Tasks, Notes, Timer, Stopwatch, Calculator
	<b>Internet</b>	
	<b>Entertainment</b>	TrackID™, My Games, FM radio, Record sound
	<b>Camera</b>	
	<b>Messaging</b>	Write new, Inbox, Call voicemail, Drafts, Outbox, Sent messages, Saved msgs, Templates, Settings
	<b>Music player</b>	Play view, Artists, Tracks, Playlists
	<b>Calls*</b>	
	<b>Contacts</b>	New contact
	<b>Settings*</b>	

Some menus and icons in this document may vary depending on operator, network or subscription.  
\* You can use the navigation key to select tabs in sub menus.

Screen icons

These icons may appear on the screen.

Icon	Description
	Battery icon. A completely green icon means the battery is fully charged
	You have missed a call
	Ongoing call
	The phone is set to silent
	The keypad is locked
	You have received a new text message
	You have received a new picture message
	An alarm is activated
	The radio is playing
	The music player is playing
	A handsfree is connected
	The Bluetooth function is activated
	A Bluetooth handsfree is connected
	The loudspeaker is on

Navigation

- To navigate the menus**
- From standby press **[Menu]** to select **Menu**.
  - Press **[Left]**, **[Right]**, **[Up]**, **[Down]** to move through the menus.

- To select items and actions shown on the screen**
- Press either of the selection keys or **[Menu]**.

- To select a tab**
- Go to the tab by pressing **[Left]** or **[Right]**.

- To return to standby**
- Press **[Power]**.

- To operate the keypad lock**
- To lock the keypad, close the slide.
  - To unlock the keypad, open the slide.
  - To unlock the keypad with closed slide, press any key, then select **Unlock** > **OK**.

! Calls to the international emergency number 112 can still be made, even when the keypad is locked.

- To set the phone to silent**
- Press and hold down **[Power]**.

- To delete items**
- Press **[C]** to delete items such as numbers, letters and pictures.

Shortcuts

You can use keypad shortcuts to go directly to a menu from standby.

To use the navigation key shortcuts

- From standby press **[Left]**, **[Right]**, **[Up]** or **[Down]** to go directly to a function.

To edit a navigation key shortcut

- From standby select **Menu** > **Settings** > the **General** tab > **Shortcuts**.

To use the shortcut key

- Press **[F1]** to **Add**, **Delete**, **Move** or use shortcuts.

Calling

You must turn on the phone and be within range of a network.

To make a call

- From standby enter the area code and phone number.
- Press **[Call]**.

To activate the slide for answering and ending calls

- From standby select **Menu** > **Settings** > the **Calls** tab.
- Select **Open to answer** > **On** to activate answering.
- Select **Close to end call** > **On** to activate call ending.

To answer a call

- Press **[Call]** or open the slide.

To end a call

- Press **[Power]** or close the slide.

To reject a call

- Press **[Power]**.

To turn off the ringtone when receiving a call

- Press **[F2]** to turn off the ringtone without answering or rejecting the call.

To turn the loudspeaker on during a call

- Select **SpkrOn**.

⚠ Do not hold the phone to your ear when using the loudspeaker. This could damage your hearing.

- To mute the microphone during a call**
- Press and hold **[Call]** to turn the microphone on and off.

To change the ear speaker volume during a call

- Press **[Up]** or **[Down]**.

To make international calls

- From standby press and hold down **[+]** until a + sign appears on the screen.
- Enter the country code, area code (without the first zero) and phone number.

Call list

You can view information about recent calls.

To call a number from the call list

- From standby press **[Call]**.
- Go between the tabs **All**, **Answered**, **Dialed** and **Missed**.
- Find the name or number and press **[Call]**.

To clear the call list

- From standby press **[Call]**.
- Select the **All** tab > **Options** > **Delete all**.

Messaging

Text messages (SMS)

You must have a service center number, which is supplied by your service provider and saved on the SIM card. You may have to enter the number yourself.

To set a service center number

- From standby select **Menu** > **Messaging** > **Settings** > **Text message** > **Service center**.
- If there is no number shown, enter the service number, including the international "+" sign and country code.
- Select **Save**.

To write and send a text message

- From standby select **Menu** > **Messaging** > **Write new** > **Text message**.
- Enter the message and select **Cont**.
- Select a recipient (**Enter phone no.** or **Contacts lookup**) and select **Send**.

💡 See [Entering text](#) on page 24.

Received messages are saved in the **Inbox**.

To read or delete received messages in the Inbox

- From standby select **Menu** > **Messaging** > **Inbox**.
- Scroll to the message you want to read or delete.
- To read the message, select **View**. To delete the message, press **[C]**.

Picture messages (MMS)

Picture messages can contain text, images and sounds.

! You must set an MMS profile and the address of your message server. You can receive all the settings from your network operator or at [www.sonyericsson.com/support](http://www.sonyericsson.com/support).

To create and send a picture message

- From standby select **Menu** > **Messaging** > **Write new** > **Picture msg**.
- Press **[Up]** or **[Down]** to switch between writing text and adding items. Select **Options** to select writing options.
- When the message is ready, select **Cont**.
- Select a recipient (**Enter email addr.**, **Enter phone no.** or **Contacts lookup**) and select **Send**.

! Sending and receiving phones must have subscriptions that support picture messaging.

You can save contacts in the phone memory or on the SIM card. You can copy contacts from the phone memory to the SIM card or from the SIM card to the phone memory.

💡 See [Entering text](#) on page 24.

To add a contact

- From standby select **Menu** > **Contacts**.
- Scroll to **New contact** and select **Add**.
- Scroll to **Name**: and select **Add**.
- Enter the name and select **OK**.
- Scroll to **New number** and select **Add**.
- Enter the number and select **OK**.
- Select a number option.
- Navigate between tabs and fields and add information.
- Select **Save**.

💡 You can enter the + sign and country code with all phonebook numbers. They can then be used abroad or at home. See [To make international calls](#) on page 14.

To call a contact

- From standby select **Menu** > **Contacts**.
- Scroll to the contact, or enter the first few letters of the contact with multitap (see [Entering text](#) on page 24).
- Press **[Call]**.

To edit a contact

- From standby select **Menu** > **Contacts**.
- Scroll to the contact and select **Options** > **Edit contact**.
- Navigate between the tabs, edit the information and select **Save**.

To delete a contact

- From standby select **Menu** > **Contacts**.
- Scroll to the contact and press **[C]**.

To copy all contacts to the SIM card

- From standby select **Menu** > **Contacts**.
- Scroll to **New contact** and select **Options** > **Advanced** > **Copy to SIM** > **Copy all**.

Contacts memory

The number of entries you can save in Contacts depends on the capacity of your SIM card.

To check the Contacts memory status

- From standby select **Menu** > **Contacts**.
- Select **Save** to stop the recording. The recording is saved in **Menu** > **Organizer** > **File manager** > **My radio recs**.

Radio

To listen to the radio

- Connect the handsfree to the phone.
- From standby select **Menu** > **Entertainment** > **FM radio**.

To control the radio

- Press **[Left]** or **[Right]** to search for channels manually.
- Press **[Up]** or **[Down]** to change the volume.

To save a radio channel in the channels list

- Find the radio channel, then press and hold down **[F1]** – **[F2]** to save it on the corresponding position.

To listen to a radio channel saved in the channels list

- When the radio is playing, press **[F1]** – **[F2]** to listen to the radio channel on the corresponding position. You can view saved channels in **Options** > **Channels** > **Select position**.

To turn off the radio

- Select **Options** > **Turn off** or press **[Power]**.

To view radio options

- When the radio is playing, select **Options**.

To record radio

- Select **Options** > **Record radio** to start recording.
- Select **Save** to stop the recording. The recording is saved in **Menu** > **Organizer** > **File manager** > **My radio recs**.

! This service is not available in all countries.

Music player



You can play music files saved in the phone memory. The music stops when you receive or make a call, and the playing resumes when the call has ended.

To play a music track

- Open the slide.
- From standby select **Menu** > **Music player**.
- Scroll to **Tracks** and select **Open**.
- Scroll to the track and select **Play**.

To change the volume

- When music is playing, press **[Up]** or **[Down]**.

To create a playlist

- From standby select **Menu** > **Music player**.
- Scroll to **Playlists** and select **Open**.
- Scroll to **New playlist** and select **Add**.
- Enter a name and select **OK**.
- Scroll to a track and select **Mark** to mark the tracks you want to add. To browse a folder, select **Open**.
- Select **Add**.

To minimize the music player on the screen

- When music is playing, select **Minim**.

To stop the music player when minimized

- From standby select **Menu** > **Music player**.
- Select **Play view** > **Stop**.

Camera

Your phone has a digital camera to take pictures to save or send. The format is JPEG.

! Pictures downloaded using picture messages, Internet or Bluetooth are saved in **Pictures**.

To start the camera and take a picture

- Open the slide.
- From standby select **Menu** > **Camera**.
- Use **[Up]** and **[Down]** to zoom, **[Left]** and **[Right]** to change brightness, or select **Options** to view camera options.
- Select **TakePic** to take the picture. It is automatically saved in **Menu** > **Organizer** > **File manager** > **Camera album**.
- Select **Delete** to delete the picture, or **Back** to take another picture.

To send a camera picture as a picture message (MMS)

- From standby select **Menu** > **Organizer** > **File manager** > **Camera album**.
- Highlight a picture and select **Options** > **Send** > **As picture msg**.
- Press **[Up]**, enter text and select **Cont**.
- Select a recipient (**Enter email addr.**, **Enter phone no.** or **Contacts lookup**) and select **Send**.

💡 See [To send a camera picture using Bluetooth](#) on page 32.



## More functions

### Ringtones and themes

Themes are used to change the appearance of the screen.

**To select volume, ringtone or vibrating alert**

- 1 From standby select **Menu > Settings > the Sounds & alerts** tab.
- 2 Select **Ring volume** to set the volume, or select **Ringtone** to choose a ringtone, or select **Vibrating alert** to set the vibrating alert.

**To select a key sound**

- From standby select **Menu > Settings > the Sounds & alerts** tab > **Key sound** and select an option.

**To select a theme**

- From standby select **Menu > Settings > the Display** tab > **Themes** and select a theme.

**To use a picture taken with camera as wallpaper**

- From standby select **Menu > Settings > the Display** tab > **Wallpaper** and select a picture.

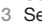
### Alarms


You can set a sound or the radio as an alarm signal. The alarm sounds even if the phone is turned off.

**To set an alarm**

- 1 From standby select **Menu > Organizer > Alarms**.
- 2 Scroll to an alarm and select **Edit**.
- 3 Scroll to **Time**; and select **Edit**. Enter a time and select **OK**.
- 4 Scroll to **Recurring**; and select **Edit**. Mark the days that you want the alarm to sound and select **Done**. If you do not select a day, the alarm will only sound on the next occasion.
- 5 Select **Save** to activate this alarm.

**To set the signal for an alarm**

- 1 From standby select **Menu > Organizer > Alarms**.
- 2 Scroll to an alarm and select **Edit**.
- 3 Select the  tab > **Alarm signal** and select a signal.
- 4 Select **Save**.

 *You need to keep a handsfree inserted to use the radio as an alarm signal. The handsfree works as an antenna, the signal will sound through the loudspeaker.*

**To silence the alarm**

- 1 When the alarm sounds, select **Silent**.
- 2 To turn off the alarm, select **TurnOff**. To repeat the alarm, select **Snooze**.

### TrackID™

TrackID™ is a music recognition service. Search for song titles, artists and album names. You must have correct Internet settings in your phone. See *Internet* on page 29.

 *For cost information contact your service provider.*

**To search for song information**


- When you hear a song through a loudspeaker, from standby select **Menu > Entertainment > TrackID™**.

**To identify a song on the radio**

- When the radio is playing, select **Options > TrackID™**.

### Entering text

There are two methods you can use to enter text: multitap or predictive text input.

 *By using predictive text input you only have to press each key once. Continue writing a word even if it appears to be wrong. The phone uses the dictionary to recognize the word when all letters are entered.*

**To enter text using multitap**

- Press **[2] – [9]** repeatedly until the letter appears.
- Press **[#-0]** to add a space.
- Press **[.0]** to enter punctuation marks.

**To enter text using predictive text input**

- For example, if you want to write the word “land”, press **[5], [2], [6], [3]**.
- If the word or punctuation mark is the one you want, press **[<->]** to accept and add a space. To accept a word without adding a space, press **[>]**.
- If the word or punctuation mark is not the one you want, press **[<|>]** or **[<|>]** repeatedly to view alternative words.

**To add a word to the dictionary**

- 1 When you write the message, select **Options > Spell word**.
- 2 Enter the word using multitap and select **Insert**.

**How to use the keys**

- Press and hold down **[<=>]** to change the input method.
- Press **[<=>]** to shift between upper case and lower case letters.
- Press and hold down **[<->]** to change the writing language.
- Press **[<->]** to delete characters. To delete a whole word, press and hold down **[<->]**.
- Press and hold down **[<+>] – [<->]** to enter numbers.

### Multiple calls

When call waiting is activated, you will hear a beep when you receive a second call.

**To activate call waiting**

- From standby select **Menu > Settings > the Calls** tab > **Manage calls > Call waiting > Activate**.

**To answer a second call**

- 1 When you hear a beep during a call, select **Answer**. Your ongoing call is put on hold.
- 2 Select **Options > Switch calls** to switch between the calls.

**To reject a second call**

- When you hear a beep during a call, select **Busy**.

### Emergency calls

Your phone supports international emergency numbers, for example, 112 and 911. These numbers can normally be used for emergency calls in any country, with or without the SIM card, if a GSM network is within range.

**To make an emergency call**

- From standby enter 112 (the international emergency number) and press **[<=>]**.

**To view or edit your local emergency numbers**

- 1 From standby select **Menu > Contacts**.
- 2 Scroll to **New contact** and select **Options > Special numbers > Emergency nos**.

### Voicemail

Callers can leave a voicemail message when you cannot answer. Ask your operator for your voicemail number.

**To enter your voicemail number**

- 1 From standby select **Menu > Messaging > Settings > Voicemail no**.
- 2 Enter the voicemail number and select **OK**.

**To call your voicemail service**

- From standby press and hold down **[1&0]**.

### Calendar

**To add an appointment in the Calendar**

- 1 From standby select **Menu > Organizer > Calendar**.
- 2 Select a date.
- 3 Scroll to **New appoint**, and select **Add**.
- 3 Enter the information and confirm each entry.
- 5 Select **Save**.

**To view or edit an appointment**

- 1 From standby select **Menu > Organizer > Calendar**.
- 2 Select a date.
- 3 Scroll to an appointment and select **View**.
- 4 Select **OK** if you are done viewing, or select **Options > Edit** to edit the appointment.

### Time and date

**To set the time**

- 1 From standby select **Menu > Settings > the General** tab > **Time & date > Time**.
- 2 Select **Format** and choose a time format.
- 3 Enter the time and select **Save**.

**To set the date**

- 1 From standby select **Menu > Settings > the General** tab > **Time & date > Date**.
- 2 Select **Format** and choose a date format.
- 3 Enter the date and select **Save**.

### Language

You can select the language for the phone menus.

**To change the phone language**

- 1 From standby select **Menu > Settings > the General** tab > **Language > Phone language**.
- 2 Select a language.

22

23

24

25

26

27

28

### Internet

To browse the Internet, you need the correct settings in your phone. If settings are not in your phone, you can:

- Get them in a text message (SMS) from your network operator.
- On a computer, go to [www.sonyericsson.com/support](http://www.sonyericsson.com/support) and request a text message with the settings.

**To select an Internet profile**

- From standby select **Menu > Settings > the Connectivity** tab > **Internet settings > Internet profiles**. Select a profile.

**To start browsing the Internet**

- 1 From standby select **Menu > Internet**.
- 2 Select **Options > Go to** and select an option.

**To stop browsing the Internet**

- Select **Exit**.

### File manager

You can use the file manager to handle files saved in the phone memory.

**To view information about a file in the file manager**

- 1 From standby select **Menu > Organizer > File manager**.
- 2 Navigate to the file and select **Options > Information**.

**To move a file to a folder in the file manager**


- 1 From standby select **Menu > Organizer > File manager**.
- 2 Find the file and select **Options > Manage file > Move**.
- 3 Navigate to the folder and select **Paste**.

**To delete a file in the file manager**

- 1 From standby select **Menu > Organizer > File manager**.
- 2 Find the file and press **[<->]** or select **Options > Delete**.

### Mass storage

You can connect your phone to a computer with a USB cable to transfer files using **USB Mass storage**.

 *Only use a USB cable supported by your phone. Do not remove the USB cable from your phone or computer during file transfer as this may corrupt the phone memory.*


**To use Mass storage**

- 1 Turn on your phone and connect the USB cable to your phone and computer. The phone will shut down in this mode and restart when disconnected.
- 2 Select **Yes** in the phone to start the **Mass storage** session.
- 3 In the computer, open the phone folder to view files and folders in the phone.
- 4 Drag and drop files between the phone and the computer.
- 5 In the computer, remove the removable disk safely to exit the **Mass storage** session.

### Bluetooth™ wireless technology


Bluetooth™ wireless technology enables wireless connections to other Bluetooth devices, for example, a Bluetooth handsfree. You can:

- Connect to several devices at the same time.
- Exchange items.

 *The recommended maximum distance between two Bluetooth devices is 33 feet (10 meters), with no solid objects in between.*


**To turn the Bluetooth function on**

- From standby select **Menu > Settings > the Connectivity** tab > **Bluetooth > Turn on**.

 *Please check if local laws or regulations restrict the use of Bluetooth wireless technology. If it is not allowed, you must ensure that the Bluetooth function is turned off.*

**To show or hide your phone**

- From standby select **Menu > Settings > the Connectivity** tab > **Bluetooth > Visibility > Show phone or Hide phone**.

 *If set to hide, other devices will not be able to identify your phone using Bluetooth wireless technology.*

**To pair a device with your phone**

- 1 Make sure the phone and the device are visible and ready to paired.
- 2 From standby select **Menu > Settings > the Connectivity** tab > **Bluetooth > My devices > New device** to search for available devices.
- 3 Select a device from the list. Enter a passcode, if required.

**To pair your phone with a Bluetooth handsfree**

- 1 Make sure that the phone and the handsfree are visible and ready to be paired.
- 2 From standby select **Menu > Settings > the Connectivity** tab > **Bluetooth > Handsfree**.
- 3 Select **Yes** if you are adding a Bluetooth handsfree for the first time or select **My handsfree > New handsfree** if you are pairing with another Bluetooth handsfree.

**To receive an item**


- 1 From standby select **Menu > Settings > the Connectivity** tab > **Bluetooth > Visibility > Show phone**.
- 2 When you receive the item, follow the instructions in your phone.

**To send a camera picture using Bluetooth**

- 1 From standby select **Menu > Organizer > File manager > Camera** picture.
- 2 Scroll to the picture and select **Options > Send > Via Bluetooth**.

### SIM card lock

The SIM card lock protects your subscription, but not your phone itself, from unauthorized use. If you change SIM cards, the phone still works with the new SIM card. Most SIM cards are locked at the time of purchase. If the SIM card lock is on, you have to enter a PIN (Personal Identity Number) every time you turn on your phone. If you enter your PIN incorrectly three times in a row, the SIM card is blocked. This is indicated by the message **PIN blocked. To unlock, enter your PUK code provided by your service provider**. To unlock it, enter your PUK (Personal Unblocking Key). Your PIN and PUK are supplied by your network operator.

 *If the message Wrong PIN Attempts remaining: appears when you edit your PIN, you entered the PIN or PIN2 incorrectly.*

**To unblock your SIM card**

- 1 When **PIN blocked. To unlock, enter your PUK code provided by your service provider**, is displayed, enter your PUK and select **OK**.
- 2 Enter a new PIN and select **OK**.
- 3 Re-enter the new PIN to confirm and select **OK**.

**To turn the SIM card lock on**

- 1 From standby select **Menu > Settings > the General** tab > **Security > SIM lock > Protection > On**.
- 2 Enter your PIN and select **OK**.

**To edit your PIN**

- 1 From standby select **Menu > Settings > the General** tab > **Security > SIM lock > Change PIN**.
- 2 Enter your PIN and select **OK**.
- 3 Enter a new PIN and select **OK**.
- 4 Re-enter the new PIN to confirm and select **OK**.

**To edit your PIN2**

- 1 From standby select **Menu > Settings > the General** tab > **Security > SIM lock > Change PIN2**.
- 2 Enter your PIN2 and select **OK**.
- 3 Enter a new PIN2 and select **OK**.
- 4 Re-enter the new PIN2 to confirm and select **OK**.

### Phone lock


The phone lock protects the phone against unauthorized use if it is stolen and the SIM card is exchanged. You can change the phone lock code (which is 0000 by default) to any four-digit personal code. If the phone lock is set to **Automatic**, you do not need to enter your phone lock code until a different SIM card is inserted in the phone.

**To turn the phone lock on**

- 1 From standby select **Menu > Settings > the General** tab > **Security > Phone lock > Protection > On**.
- 2 Enter the phone lock code and select **OK**.

**To edit your phone lock code**

- 1 From standby select **Menu > Settings > the General** tab > **Security > Phone lock > Change code**.
- 2 Enter the current code and select **OK**.
- 3 Enter a new code and select **OK**.
- 4 Re-enter the new code to confirm and select **OK**.

 *If you forget your new code, you have to take your phone to your local Sony Ericsson retailer.*

**To unlock the phone**

- 1 From standby select **Menu > Settings > the General** tab > **Security > Phone lock > Protection > Off**.
- 2 Enter your phone lock code and select **OK**.

## Troubleshooting

Some problems require that you call your service provider, but you can correct most problems yourself. Remove the SIM card before handing your phone in for repair. Go to [www.sonyericsson.com/support](http://www.sonyericsson.com/support) for more information.

### Memory capacity and speed


If you have not restarted the phone for a while, you may experience problems with its memory capacity and speed. You can restart the phone to improve its capacity.

- 1 Turn off the phone and remove the battery cover.
- 2 Remove the phone battery and then put it back in place.
- 3 Replace the battery cover and turn on the phone.

**Master reset**

If you experience problems with screen flickering, freezing, or navigation problems, you should reset the phone.

- From standby select **Menu > Settings > the General** tab > **Master reset** and select an option.

 *Reset settings will reset all changes that you have made in your phone to default.*

*Reset all will delete all user data as contacts, messages, pictures and sounds in your phone.*

[www.sonyericsson.com](http://www.sonyericsson.com)

### Sony Ericsson

Sony Ericsson Mobile Communications AB  
SE-221 88 Lund, Sweden



1210-3541.4

Printed in XXXX

36

37

### Declaration of conformity for T303a

We, Sony Ericsson Mobile Communications AB of Nya Vatterntorget, SE-221 88 Lund, Sweden declare under our sole responsibility that our product Sony Ericsson type AAB-1032091-BV and in combination with our accessories, to which this declaration relates is in conformity with the appropriate standards EN 301 511:V9.0.2, EN 300 328:V1.7.1, EN 301 489-7:V1.3.1, EN 301 489-17:V1.2.1 and EN 60950-1:2006, following the provisions of, Radio Equipment and Telecommunication Terminal Equipment Directive 1999/5/EC. Lund, March 2008

Shoji Nemoto, Head of Product Business Unit GSM/UMTS  
We fulfill the requirements of the R&TTE Directive (99/5/EC).

### FCC statement

This device complies with Part 15 of the FCC rules. Operation is subject to the following conditions:  
(1) This device may not cause harmful interference, and (2) This device must accept any interference received, including interference that may cause undesired operation.  
Any change or modification not expressly approved by Sony Ericsson may void the user's authority to operate the equipment.  
This equipment has been tested and found to comply with the limits for a Class B digital device, pursuant to Part 15 of the FCC Rules. These limits are designed to provide reasonable protection against harmful interference in a residential installation. This equipment generates, uses and can radiate radio frequency energy and, if not installed and used in accordance with the instructions, may cause harmful interference to radio communications. However, there is no guarantee that interference will not occur in a particular installation.

If this equipment does cause harmful interference to radio or television reception, which can be determined by turning the equipment off and on, the user is encouraged to try to correct the interference by one or more of the following measures:  
- Reorient or relocate the receiving antenna.  
- Increase the separation between the equipment and receiver.  
- Connect the equipment into an outlet on a circuit different from that to which the receiver is connected.  
- Consult the dealer or an experienced radio/TV technician for help.

### Industry Canada Statement

This device complies with RSS-210 of Industry Canada.  
Operation is subject to the following two conditions: (1) this device may not cause interference, and (2) this device must accept any interference, including interference that may cause undesired operation of the device. This Class B digital apparatus complies with Canadian ICES-003. Cet appareil numérique de la classe B est conforme à la norme NMB-003 du Canada.

### Sony Ericsson T303a

GSM 850/1800/1900  
This User guide is published by Sony Ericsson Mobile Communications AB or its local affiliated company, without any warranty. Improvements and changes to this User guide necessitated by typographical errors, inaccuracies of current information, or improvements to programs and/or equipment, may be made by Sony Ericsson Mobile Communications AB at any time and without notice. Such changes will, however, be incorporated into new editions of this User guide. All rights reserved.  
© Sony Ericsson Mobile Communications AB, 2008  
Please note: Some of the services in this User guide are not supported by all networks. This also applies to the GSM International Emergency Number 112. Please contact your network operator or service provider if you are in doubt whether you can use a particular service or not. Please read the *Important information* chapters before you use your phone.

All illustrations are for illustration only and may not accurately depict the actual phone.  
Your phone has the capability to download, store and forward additional content, for example ringtones. The use of such content may be restricted or prohibited by rights of third parties, including but not limited to restriction under applicable copyright laws. You, and not Sony Ericsson, are entirely responsible for additional content that you download to or forward from your phone. Prior to your use of any additional content, please verify that your intended use is properly licensed or is otherwise authorized. Sony Ericsson does not guarantee the accuracy, integrity or quality of any additional content or any other third party content. Under no circumstances will Sony Ericsson be liable in any way for your improper use of additional content or other third party content.  
Sony is a trademark or registered trademark of Sony Corporation. Ericsson is a trademark or registered trademark of Telefonaktiebolaget LM Ericsson. The Predictive Text Technology is used under license from ZI Corporation. The Bluetooth word mark and logos are owned by the Bluetooth SIG, Inc. and any use of such marks by Sony Ericsson is under license. The Liquid Identity logo and TrackID are trademarks or registered trademarks of Sony Ericsson Mobile Communications AB. TrackID™ is powered by Gracenote Mobile. This product is protected by certain intellectual property rights of Microsoft. Use or distribution of such technology outside of this product is prohibited without a license from Microsoft. Content owners use Windows Media digital rights management technology (WM DRM) to protect their intellectual property, including copyrights. This device uses WM DRM software to access WM DRM-protected content. If the WM DRM software fails to protect the content, content owners may ask Microsoft to revoke the software's ability to use WM DRM to play or copy protected content. Revocation does not affect unprotected content. When you download licenses for protected content, you agree that Microsoft may include a revocation list with the licenses. Content owners may require you to upgrade WM DRM to access their content. If you decline an upgrade, you will not be able to access content that requires the upgrade. MPEG Layer-3 audio decoding technology licensed from Fraunhofer IIS and Thomson.

Export Regulations: Software, including technical data, is subject to U.S. export control laws, including the U.S. Export Administration Act and its associated regulations, and may be subject to export or import regulations in other countries. Customer agrees to comply strictly with all such regulations and acknowledges that it has the responsibility to obtain licenses to export, reexport, or import Software. Software may not be downloaded, or otherwise exported or re-exported (i) into, or to a national or resident of, Cuba, Iraq, Iran, North Korea, Libya, Sudan, Syria (as such listing may be revised from time to time) or any country to which the U.S. has embargoed goods; or (ii) to anyone on the U.S. Treasury Department's list of Specially Designated Nations or the U.S. Commerce Department's Table of Denial Orders. Restricted Rights: Use, duplication or disclosure by the United States government is subject to the restrictions as set forth in the Rights in Technical Data and Computer Software Clauses in DFARS 252.227-7013(c) (1) (ii) and FAR 52.227-19(c) (2) as applicable. All other trademarks and copyrights are the property of their respective owners. Any rights not expressly granted herein are reserved.

40

41