



TE365F User Guide

ENGLISH

Bluetooth QD ID B014200

LIMITED WARRANTY STATEMENT

1. WHAT THIS WARRANTY COVERS:

LG offers you a limited warranty that the enclosed subscriber unit and its enclosed accessories will be free from defects in material and workmanship, according to the following terms and conditions:

1. The limited warranty for the product extends for ONE (1) year beginning on the date of purchase of the product by the original end user.
2. The limited warranty extends only to the original end user of the product and is not assignable or transferable to any subsequent purchaser/end user.
3. This warranty is good only to the original end user of the product during the warranty period as long as it is in Canada.
4. Upon request from LG, the consumer must provide information to reasonably prove the date of purchase.
5. During the applicable warranty period, LG will repair or replace at LG's sole option, without charge to the original end user, any defective component part of the phone or accessory.
6. LG may use rebuilt, reconditioned or new parts or components when repairing any product or replace a product with a rebuilt, reconditioned or new product.

2. WHAT THIS WARRANTY DOES NOT COVER:

1. Defects or damages resulting from use of the product in other than its normal and customary manner.
2. Defects or damages from abnormal use, abnormal conditions, improper storage, exposure to moisture or dampness, unauthorized modifications, unauthorized connections, unauthorized repair, misuse, neglect, abuse, accident, alteration, improper installation or other acts which are not the fault of LG, including damage caused by spills of food or liquids.
3. Breakage or damage to antennas unless caused directly by defects in material or workmanship.
4. The fact that the Customer Service Department at LG was not notified by the original end user of the alleged defect or malfunction of the product, during the warranty period.
5. Products which have had their serial numbers removed or made illegible.
6. Damage resulting from use of non-LG approved accessories.
7. All plastic surfaces and all other externally exposed parts that are scratched or damaged due to normal customer use.

8. Products serviced by non-authorized persons or companies.

Notes:

1. This limited warranty supersedes all other warranties, expressed or implied either in fact or by operations of law, statutory or otherwise, including, but not limited to any implied warranty of merchantability or fitness for a particular purpose.
2. Shipping damage is the sole responsibility of the shipping company.

3. EXCLUSION OF LIABILITY:

No other express warranty is applicable to this product.

THE DURATION OF ANY IMPLIED WARRANTIES, INCLUDING THE IMPLIED WARRANTY OF MARKETABILITY, IS LIMITED TO THE DURATION OF THE EXPRESS WARRANTY HEREIN. LG ELECTRONICS CANADA, INC. SHALL NOT BE LIABLE FOR THE LOSS OF THE USE OF THE PRODUCT, INCONVENIENCE, LOSS OR ANY OTHER DAMAGES, DIRECT OR CONSEQUENTIAL, ARISING OUT OF THE USE OF, OR INABILITY TO USE, THIS PRODUCT OR FOR ANY BREACH OF ANY EXPRESS OR IMPLIED WARRANTY, INCLUDING THE IMPLIED WARRANTY OF MARKETABILITY APPLICABLE TO THIS PRODUCT.

4. HOW TO GET WARRANTY SERVICE:

To obtain warranty service, please call the following telephone number from anywhere in Canada:

LG Electronics Canada, Inc.

Tel. 1-888-542-2623

www.lg.ca (see links to "Wireless Phone Service")



LG Electronics Canada Inc.

Mississauga, Ontario



Some of the contents in this manual may differ from your phone depending on the software of the phone or your service provider.



TE365F User Guide

Contents

Guidelines for safe and efficient use	4	Fido Shop	30
Getting to know your phone	10	Media	31
Open view	11	Images	31
Installing the SIM card and battery	13	Sounds	31
Memory card	17	Videos	31
Your standby screen	19	Documents	31
General Functions	20	Others	32
Making a Call	20	External memory	32
Adjusting the Volume	21	Games&Apps	33
Answering a Call	21	Games	33
Entering Text	22	Applications	33
In-Call Menu	25	Network profile	33
During a Call	25	Call History	34
Conference Calls	26	All calls	34
Menu Tree	28	Missed calls	34
		Dialled calls	34
		Received calls	34
		Internet	35
		Messages	36

Tools	45	Settings	62
MP3 player	45	Fido IM	71
Camera	49	MobileMail	76
FM radio	55	Communities	77
Voice recorder.....	55	PC Sync	78
Alarm clock.....	56	Accessories	82
Calendar.....	56	Trouble Shooting	84
Memo.....	57		
Calculator	58		
Stopwatch	58		
Unit converter.....	59		
World clock	59		
Contacts	60		
Search.....	60		
New contact	60		
Speed dials.....	60		
Groups	60		
Copy all.....	60		
Delete all.....	61		
Settings	61		
Information.....	61		

Guidelines for safe and efficient use

Please read these simple guidelines. Not following these guidelines may be dangerous or illegal.

Exposure to radio frequency energy

Radio wave exposure and Specific Absorption Rate (SAR) information
This mobile phone model TE365F has been designed to comply with applicable safety requirements for exposure to radio waves. These requirements are based on scientific guidelines that include safety margins designed to assure the safety of all persons, regardless of age and health.

- The radio wave exposure guidelines employ a unit of measurement known as the Specific Absorption Rate, or SAR. Tests for SAR are conducted using standardised methods with the phone transmitting at its highest certified power level in all used frequency bands.

- While there may be differences between the SAR levels of various LG phone models, they are all designed to meet the relevant guidelines for exposure to radio waves.
- The highest SAR value for this model phone when tested for use at the ear is 0.998 W/kg and when worn on the body as described in this users manual, is 1.2 W/kg. The limit is 1.6 W/kg(1g) for USA & Canada.

Body on Operation

This Device has been tested for typical body-worn operations with the distance of 0.79 inches(2.0cm) from the user's body. To comply with FCC RF exposure requirements, a minimum separation distance of 0.79 inches(2.0cm) must be maintained from the user's body. Additionally, belt clips, holsters & other body-worn accessories may not contain metallic components.

Caution & Notice

Operation is subject to the following two conditions:

- (1) this device may not cause interference, and
- (2) this device must accept any interference, including interference that may cause undesired operation of the device.

Product care and maintenance

WARNING

Only use batteries, chargers and accessories approved for use with this particular phone model. The use of any other types may invalidate any approval or warranty applying to the phone, and may be dangerous.

- Do not disassemble this unit. Take it to a qualified service technician when repair work is required.
- Keep away from electrical appliances such as TVs, radios, and personal computers.
- The unit should be kept away from heat sources such as radiators or cookers.
- Do not drop.
- Do not subject this unit to mechanical vibration or shock.
- Switch off the phone in any area where you are required by special regulations. For example, do not use your phone in hospitals as it may affect sensitive medical equipment.
- Do not handle the phone with wet hands while it is being charged. It may cause an electric shock and can seriously damage your phone.
- Do not to charge a handset near flammable material as the handset can become hot and create a fire hazard.

Guidelines for safe and efficient use

- Use a dry cloth to clean the exterior of the unit (do not use solvents such as benzene, thinner or alcohol).
- Do not charge the phone when it is on soft furnishings.
- The phone should be charged in a well ventilated area.
- Do not subject this unit to excessive smoke or dust.
- Do not keep the phone next to credit cards or transport tickets; it can affect the information on the magnetic strips.
- Do not tap the screen with a sharp object as it may damage the phone.
- Do not expose the phone to liquid or moisture.
- Use the accessories like earphones cautiously. Do not touch the antenna unnecessarily.

Efficient phone operation

Electronics devices

All mobile phones may get interference, which could affect performance.

- Do not use your mobile phone near medical equipment without requesting permission. Avoid placing the phone over pacemakers, for example, in your breast pocket.
- Some hearing aids might be disturbed by mobile phones.
- Minor interference may affect TVs, radios, PCs, etc.

Road safety

Check the laws and regulations on the use of mobile phones in the area when you drive.

- Do not use a hand-held phone while driving.
- Give full attention to driving.
- Use a hands-free kit, if available.

- Pull off the road and park before making or answering a call if driving conditions so require.
- RF energy may affect some electronic systems in your vehicle such as car stereos and safety equipment.
- When your vehicle is equipped with an air bag, do not obstruct with installed or portable wireless equipment. It can cause the air bag to fail or cause serious injury due to improper performance.
- If you are listening to music whilst out and about, please ensure that the volume is at a reasonable level so that you are aware of your surroundings. This is particularly imperative when near roads.

Avoid damage to your hearing

Damage to your hearing can occur if you are exposed to loud sound for long periods of time. We therefore recommend that you do not turn on or off the handset close to your ear. We also recommend that music and call volumes are set to a reasonable level.

Glass Parts

Some parts of your mobile device are made of glass. This glass could break if your mobile device is dropped on a hard surface or receives a substantial impact. If the glass breaks, do not touch or attempt to remove. Stop using your mobile device until the glass is replaced by an authorized service provider.

Guidelines for safe and efficient use

Blasting area

Do not use the phone where blasting is in progress. Observe restrictions, and follow any regulations or rules.

Potentially explosive atmospheres

- Do not use the phone at a refueling point.
- Do not use near fuel or chemicals.
- Do not transport or store flammable gas, liquid, or explosives in the same compartment of your vehicle as your mobile phone and accessories.

In aircraft

Wireless devices can cause interference in aircraft.

- Turn your mobile phone off before boarding any aircraft.
- Do not use it on the ground without permission from the crew.

Children

Keep the phone in a safe place out of the reach of small children. It includes small parts which may cause a choking hazard if detached.

Emergency calls

Emergency calls may not be available under all mobile networks. Therefore, you should never depend solely on the phone for emergency calls. Check with your local service provider.

Battery information and care

- You do not need to completely discharge the battery before recharging. Unlike other battery systems, there is no memory effect that could compromise the battery's performance.
- Use only LG batteries and chargers. LG chargers are designed to maximize the battery life.
- Do not disassemble or short-circuit the battery pack.
- Keep the metal contacts of the battery pack clean.
- Replace the battery when it no longer provides acceptable performance. The battery pack maybe recharged hundreds of times until it needs replacing.
- Recharge the battery if it has not been used for a long time to maximize usability.
- Do not expose the battery charger to direct sunlight or use it in high humidity, such as in the bathroom.
- Do not leave the battery in hot or cold places, this may deteriorate the battery performance.
- There is risk of explosion if the battery is replaced by an incorrect type.
- Dispose of used batteries according to the manufacturer's instructions. Please recycle when possible. Do not dispose as household waste.
- If you need to replace the battery, take it to the nearest authorized LG Electronics service point or dealer for assistance.
- Always unplug the charger from the wall socket after the phone is fully charged to save unnecessary power consumption of the charger.

Getting to know your phone

Volume key

- **In standby mode:** Controls the ring volume.
- **During a call:** Controls the receiver volume when it sets as General mode.

Main screen

OK key

Left soft key

Go to the Email directly.

Call key

Dials a phone number and answers incoming calls.

Touchpad key

Activate the touch dial screen by pressing the key.

Navigation keys

• In standby mode:

- Up: Browser
- Down: Contacts Search
- Right: New messages
- Left: All calls

- **In menu:** Navigates between menus.

Right soft key

Go to the Shortcut directly.

End/Power key

Ends or rejects a call. Turns the phone on/off. Returns to the standby screen when you use the menu.

Clear key

Deletes a character with each press. Use this key to go back to the previous screen.

Charger, cable, handsfree connector

Memory card slot

Camera

Open view

Left soft key/Right soft key

Performs the function indicated at the bottom of the display.

Left soft key: Go to the Email directly.

Right soft key: Go to the Shortcut directly.

Fn key

Change from text mode to symbol/numeric mode and lock keypad.

Symbol key

Enters symbolic character.

Change the text mode
(Capital/ Small)

Alpha numeric keys

Space Key

Use to enter space while editing.

Enter key

OK key

Selects menu options and confirms actions.

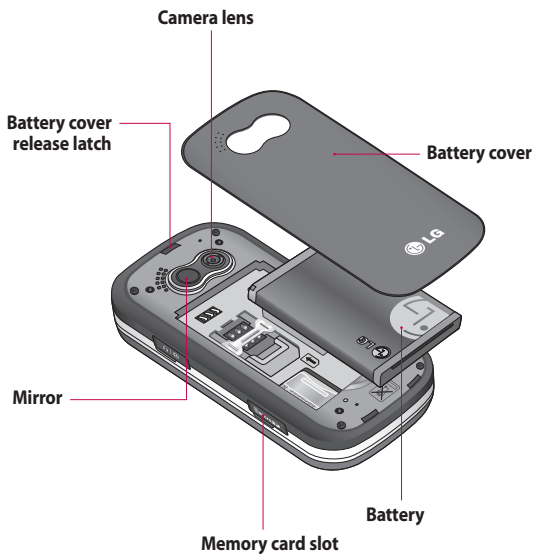
Message key

Clear key

- Clears a character with each press. Hold the key down to clear all inputs.
- Use this key to go back to a previous screen.



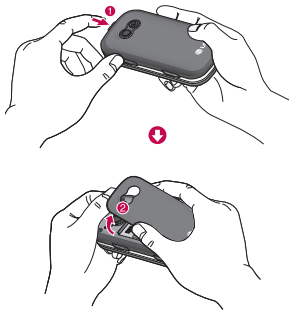
Open view



Installing the SIM card and battery

1 Remove the battery cover

Press the battery cover release latch. The battery cover should lift off easily.



2 Remove the battery

Lever the bottom edge of the battery and remove it carefully from the battery compartment.



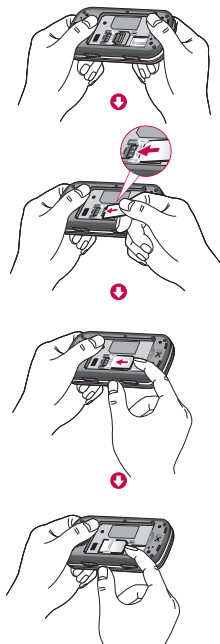
⚠ WARNING: Do not remove the battery when the phone is switched on, as this may damage the phone.

Installing the SIM card and battery

3 Install the SIM card

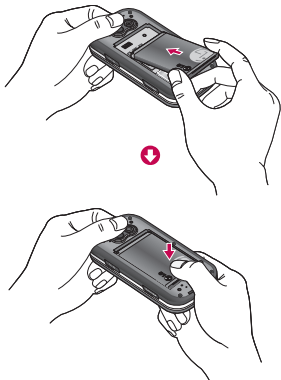
Slide the SIM card into the SIM card holder. Make sure that the gold contact area on the card is facing downwards. To remove the SIM card, push it out of the holder from the top.

⚠ WARNING: Do not insert the SIM card when the keyboard is open, as this may damage your phone and SIM card.



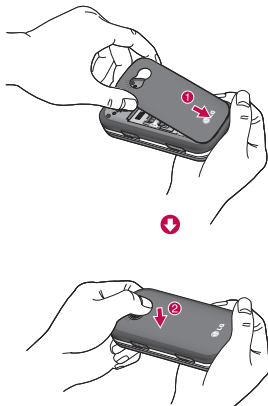
4 Install the battery

Insert the top of the battery first into the top edge of the battery compartment. Ensure the battery contacts align with the terminals on the phone. Press the bottom of the battery down until it clips into place.



5 Replace the battery cover

Insert the bottom of the battery cover and push down until it clicks into place.

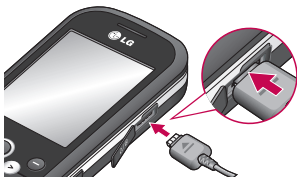


Installing the SIM card and battery

6 Charging your phone

Pull open the cover of the charger socket on the side of your TE365F. Insert the charger and plug into a mains electricity socket. Your TE365F will need to be charged until a message reading Fully Charged appears on screen.

⚠ WARNING: Do not charge the phone when it is on soft furnishings. The phone should be charged in a well ventilated area.



Memory card

Installing a memory card

You can expand the memory space available on your phone using a memory card.

TIP! A memory card is an optional accessory.

Open the memory card slot. Slide the memory card into the slot cover, until it clicks into place. Make sure that the gold contact area is facing downwards.



Removing a memory card



Open the cover and carefully remove the memory card by gently pushing it in to the phone and quickly releasing it, as shown in the following diagram:




Memory card

Formatting a memory card

If your memory card is not already formatted, you will need to do so before you can begin using it.

- 1 From the standby screen press  and select **Settings**.
- 2 Choose **Memory status** and select **External memory**.
- 3 Press **Format** and enter the password, which is set to 0000 as default. Your card will be formatted and ready to use.
- 4 To view the new formatted folders on your TE365F press  and select **Media**. Choose **External memory**.

















 **WARNING:** When you format your memory card, all the content will be wiped. If you do not want to lose the data on your memory card, back it up first.

Your standby screen

The status bar

The status bar uses various icons to indicate things like signal strength, new messages and battery life, as well as telling you whether your Bluetooth is active.





Below is a table explaining the meaning of icons you're likely to see in the status bar.

ICON	DESCRIPTION
	Network signal strength (number of bars will vary)
	No network signal
	Roaming service
	WAP service is connected
	An alarm is set
	New message
	New voice message
	General profile in use
	Silent profile in use
	Vibrate profile in use
	Outdoor profile in use
	Headset profile in use
	Remaining battery life
	Battery empty
	Schedule is on
	External memory



General Functions

Without sliding your phone, you can dial by pressing  touch dial keypad button.

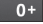

Making a Call

- 1 Make sure your phone is powered on.
- 2 Enter a phone number including the area code. To edit a number on the display screen, simply press the  key to erase one digit at a time.
- Press and hold the  key to erase the entire number.
- 3 Press the  [SEND] key to call the number.
- 4 When finished, press the  [END] key.


Making a Call with the Send Key

- 1 Press the  [SEND] key, and the most recent incoming, outgoing and missed phone numbers will be displayed.
- 2 Select the desired number by using the navigation touch pad.
- 3 Press the  [SEND] key.


Making International Calls

- 1 Press and hold the  key and the international access character '+' will appear.
- 2 Enter the country code, area code and the phone number.
- 3 Press the  [SEND] key.

Ending a Call

When you have finished a call, press the  [END] key.

Making a Call from the Contacts

You can store frequently called names and phone numbers in the SIM card as well as in the phone memory known as the Contacts. You can dial a number by simply selecting a name in the contacts and pressing the  [SEND] key.




Adjusting the Volume

During a call, if you want to adjust the earpiece volume, use the side volume keys of the phone.

In idle mode, you can adjust the ring volume using the side volume keys.

Answering a Call


When you receive a call, the phone rings and the phone icon appears on the screen. If the caller can be identified, the caller's phone number (or name if stored in your Address Book) is displayed.

- 1 Press the  [SEND] key or the left soft key to answer an incoming call. If Any Key has been set as the Answer Mode (Menu > 9 > 5 > 4 > 2), any key press will answer a call except for the  [END] key or the right soft key.
- 2 End the call by pressing the  [END] key.

General Functions

Note: You can answer a call while using the Address Book or other menu features.

Vibrating Mode (Quick)

Vibrating Mode can be activated by pressing and holding down the  key.

Signal Strength


If you are inside a building, being near a window may give you better reception. You can see the strength of your signal by the signal indicator on your phone's display screen.

Entering Text

You can enter alphanumeric characters by using the phone's keypad. For example, storing names in the Address Book, writing a message or scheduling events in the calendar all require text to be entered.

The following text input modes are available on the phone.

Changing the Text Input Mode


Change the text input mode by pressing .

You can check the current text input mode in the upper right corner of the screen.

ABC Mode



This mode allows you to enter letters by pressing the key labeled with the required letter once, twice, three or four times until the letter is displayed.


123 Mode (Numbers Mode)

Type numbers using one keystroke per number. To change to 123 mode in a text entry field, press the  key until 123 mode is displayed in the upper right corner.

Symbol Mode




The Symbol Mode enables you to enter various symbols or special characters.

To delete letters, press .
Press and hold down  to continuously erase the letters.

Note: Pressing the  [END] key will save your unsaved message in the Drafts folder.

Using the ABC Mode

Use the keypad keys to enter your text.

- 1 Press the key labeled with the required letter:
 - When slide open, one press is one letter.
- 2 To insert a space, press the  key once. To delete letters, press the  key. Press and hold down the  key to continuously erase the letters.

General Functions

Note: Refer to the table below for more information on the characters available using the keys.

Using the 123 (Numbers) Mode

The 123 Mode enables you to enter numbers in a text message (a telephone number, for example) more quickly. Press the keys corresponding to the required digits before manually switching back to the appropriate text entry mode.

In-Call Menu

Your phone provides a number of control functions that you can use during a call. To access these functions during a call, press the left soft key [Options].

During a Call


The menu displayed on the handset screen during a call is different from the default main menu displayed when in the idle screen, and these options are described below.

Making a Second Call


You can select a number you wish to dial from the Contacts, to make a second call. Press the Left soft key then select Contacts. Then, you can press SEND key to make a second call.


Swapping Between Two Calls

By using one of two methods, you can switch between two calls.

- 1 Press the  [SEND] key.
- 2 Press the left soft key and then select "Swap".


Answering an Incoming Call

To answer an incoming call when the handset is ringing, simply press the  [SEND] key. The handset is also able to warn you of an incoming call while you are already on a call. A tone sound in the earpiece, and the display will show that a second call is waiting. This feature, known as Call Waiting, is only available if your network supports it.

If Call Waiting is turned on, you can put the first call on hold and answer the second call by pressing the  [SEND] key.

In-Call Menu

Rejecting an Incoming Call


You can reject an incoming call without answering by simply pressing the  [END] key.

Muting the Microphone

You can mute the microphone during a call by pressing the right soft key [Mute]. The handset can be unmuted by pressing the right soft key [Unmute]. When the handset is muted, the caller cannot hear you, but you can still hear the caller.

Using the Speakerphone

You can use the integrated Speakerphone during a call by pressing the OK key. The loudspeaker is automatically deactivated when you end the call.

 **WARNING:** Due to increased volume levels, do not place the phone near your ear while the speakerphone is enabled.



Conference Calls

The conference service provides you with the ability to have a simultaneous conversation with more than one caller. The conference call feature can be used only if your network service provider supports this feature.

A conference call can only be set up when you have one call active and one call on hold, meaning both calls must have been answered. Once a conference call is set up, calls may be added, disconnected or separated (that is, removed from the conference call but still connected to you) by the person who set up the conference call. These options are all available from the In-Call menu.

The maximum number of callers in a conference call is five. Once started, you are in control of the conference call, and only you can add calls to the conference call.


Making a Second Call

You can make a second call while currently on a call simply by entering the second number and pressing the  [SEND] key. When the second call is connected, the first call is automatically placed on hold. You can swap calls by pressing the  [SEND] key.

Setting Up a Conference Call

To set up a conference call, place one call on hold, then conference in the second active call by pressing the left soft key [Options] and select the Join Calls sub menu option from the Conference Call menu.

Activate the Conference Call on Hold

To activate a conference call on hold, press the  [SEND] key.


Adding Calls to the Conference Call

To add a call to an existing conference call, press the left soft key, and then select the Join Calls sub menu from the Conference Call option.

Private Call in a Conference Call

To have a private call with one caller from a conference call, press the left soft key and select Private Call from the Conference Call option. When the numbers of the callers are displayed, select the one you wish to speak in private with.

Ending a Conference Call

The currently active conference call can be disconnected by pressing the  [END] key.

Menu Tree

1. Fido Shop

2. Media

- 2.1 Images
- 2.2 Sounds
- 2.3 Videos
- 2.4 Documents
- 2.5 Others
- 2.6 External memory

3. Games&Apps

- 3.1 Games
- 3.2 Applications
- 3.3 Network profile

4. Call History

- 4.1 All calls
- 4.2 Missed calls
- 4.3 Dialed calls
- 4.4 Received calls

5. Internet

- 5.1 Home
- 5.2 Yahoo! oneSearch
- 5.3 Bookmarks
- 5.4 Enter address
- 5.5 History
- 5.6 Settings
- 5.7 Information

6. Messages

- 6.1 New message
- 6.2 Inbox
- 6.3 Drafts
- 6.4 Outbox
- 6.5 Sent
- 6.6 Listen to voicemail
- 6.7 Info messages
- 6.8 Templates
- 6.9 Settings

7. Tools

- 7.1 MP3 player
- 7.2 Camera
- 7.3 FM radio
- 7.4 Voice recorder
- 7.5 Alarm clock
- 7.6 Calendar
- 7.7 Memo
- 7.8 Calculator
- 7.9 Stopwatch
- 7.0 Unit converter
- 7.* World clock

8. Contacts

- 8.1 Search
- 8.2 New contact
- 8.3 Speed dials
- 8.4 Groups
- 8.5 Copy all
- 8.6 Delete all
- 8.7 Settings
- 8.8 Information

9. Settings

- 9.1 Profiles
- 9.2 Date&Time
- 9.3 Languages
- 9.4 Display
- 9.5 Call
- 9.6 Connectivity
- 9.7 Security
- 9.8 Flight mode
- 9.9 Power save
- 9.0 Reset
- 9.* Memory status
- 9.# Phone Information

*. Fido IM

- *.1 Windows Live
- *.2 Yahoo! Messenger

0. MobileMail

#. Communities

Fido Shop

Fido Shop provides access to buy Ring Tunes, Games and other stuffs for your phone that Fido offer. It also provides quick access to many community sites like Facebook and More or surf the internet right from your phone.

Media

Images

Menu 2.1

Get New Graphics: This menu option connects to Roger's graphic download site. This allows users to download the various graphics by connecting to the Internet.

Default images: You can see the graphic files on your phone.

Default flash files: You can see flash graphic files on your phone.

Sounds

Menu 2.2

Get New Ringtones: This menu option connects to Roger's ringtone download site.

Default sounds: You can view the audio sounds on your phone.

Videos

Menu 2.3

Get New Videos: This menu option connects to Roger's video download site. This allows users to download the various videos by connecting to the Internet.

Documents

Menu 2.4

This menu enables you to view document files.

Media

Others

Menu 2.5

When you receive files of an undefined format (such as .vcs, .vcf, etc.) via email and via Bluetooth, the files are saved in this folder.

The following [Options] are available.

Send via: Allows selected file to be sent via email and Bluetooth.

File

New Folder: Allows you to make a new folder.

Mark/Unmark: Allows you to mark or unmark the chosen file.

Delete all: Deletes all the files.

Sort by: You can sort the files by name, date and type.

External memory

Menu 2.6

This function shows the status of the external microSD™ card memory.

Games&Apps

Games

Menu 3.1

Note: The JAR file is a compressed format of the Java program and the JAD file is a description file that includes all detailed information. From the network, prior to download, you can view all detailed file descriptions from the JAD file.



WARNING:

Only J2ME (Java 2 Micro Edition) based programs will run in a phone environment.

J2SE (Java 2 Standard Edition) based programs will only run in a PC environment.

Download Games: This menu option connects to Fido's game download site.

You can see the default and downloaded games in the list.

Applications

Menu 3.2

This menu displays the list of Java programs downloaded using WAP. All previously downloaded programs can be selected, deleted or viewed in detail within the Application menu.

Get New Apps

MobileMail

Network profile

Menu 3.3

To download a game, you can set the value to connect to the network using Network profile.

Call History

All calls

Menu 4.1

Allows you to view all of missed, received, and dialed call records.

Missed calls

Menu 4.2

- View the number, if available, and call it or save it in the Contact.
- Enter a new name for the number and save both in the Contact.
- Send a message using this number.
- Delete the call from the list.

Dialed calls

Menu 4.3

- View the number, if available, and call it or save it in the Contact.
- Enter a new name for the number and save both in the Contact.
- Send a message using this number.
- Delete the call from the list.

Received calls

Menu 4.4

- View the number, if available, and call it or save it in the Contact.
- Enter a new name for the number and save both in the Contact.
- Send a message using this number.
- Delete the call from the list.

Internet

This menu shows how to access the Internet by launching the WAP browser.

Note: Check the availability of WAP services and pricing with your network operator and/or the service provider whose service you wish to use. Service providers will also give you instructions on how to use their services.

Once connected, the homepage is displayed. The content depends on the service provider.


To exit the browser at any time, press the [END] key and tap [Yes]. The idle screen is displayed.

Messages

Messages

Your TE365F includes functions related to SMS (Short Message Service), MMS (Multimedia Message Service) and email, as well as the network's service messages. Simply press  and select **Messages**.

Sending a message

- 1 Press **Menu** or , select **Messages** and choose **New message**. Or, a quicker way is to press right soft key to go Shortcut Menu.
- 2 Choose **Message** to send an SMS or MMS.
- 3 A new message editor will open. Message editor combines SMS and MMS into one intuitive and easy to switch between mode. The default setting of the message editor is SMS mode.
- 4 Enter your message using the keypad. See page 22, 38 for more information on how to enter text.
- 5 Select **Options** and choose **Insert** to add an Image, Sound, Video, Symbol, Text template, Emoticon, Name & Number, New slide, Subject or More (Contact/My business card/Schedule).
- 6 Choose **Send to**.
- 7 Enter the phone number or press **Options** and select **Contacts** or **Recent list** to open your contacts list. You can add multiple contacts.
- 8 Select **Send**.




WARNING: If an **Image, Sound, Video, New slide** or **Subject** is added to the message editor, it will be automatically converted to MMS mode and you will be charged accordingly.

Entering text

You can enter alphanumeric characters using the phone's keypad. For example, storing names in Contacts, writing a message and creating scheduling events in the calendar all require entering text. The following text input methods are available in the phone: ABC manual mode and 123 mode.

Note: Some fields may allow only one text input mode (e.g. telephone number in address book fields).

To input a symbol in the text entry field, press the  key and select a symbol, then select **OK**.

Scroll using the navigation keys to show more symbol options.

Complete each word with a space by pressing .

To delete a character, press  key.

Fn key


Once: Number mode.

Twice: Fn lock mode to keep using Number mode.

Messages


Text input mode using the keypad

When you are required to enter text, for example when writing a message, the keypad will default to Abc mode. If you are entering a number, for example when making call, the keypad number keys will default to numbers.

In ABC mode you can enter numbers by first pressing  and then the number you require.

To change the Text Entry Mode, press the [Options] - [Text Entry Mode] and choose the text mode you want.

Message folders

Press **Menu** or , select **Messages**. The folder structure used on your TE365F is fairly self-explanatory.

Inbox: All the messages you received are placed into your Inbox. From here you can reply, forward and more, see below for details.

Drafts: If you don't have time to finish writing a message, you can save what you have done so far here.

Outbox: This is a temporary storage folder while messages are being sent.

Sent: All the messages you sent are placed into your Sent folder.

Listen to voicemail: You can access your voicemail box (if provided by your network).


When a new voice message is received, the symbol will be displayed on the standby screen.

Info messages: All info messages and updates received from your operator.

Templates: A list of useful messages, already written for a quick reply.

Managing your messages

You can use your **Inbox** to manage your messages.

- 1 Press **Menu** or , select **Messages** and choose **Inbox**.
- 2 Select **Options** and then choose to:

Delete: Delete the selected message.

Reply: Send a reply to the selected message.

Forward: Send the selected message to another person.

Return call: Call the person who sent you the message.

Threaded view/General view: Choose the way messages are displayed in your inbox.

Information: View the details of a message, for example, the time it was received.

Messages

Copy/Move: Choose copy or move the selected message to the SIM card or phone.

Multi delete: Delete selected messages.

Delete all read: All opened messages will be deleted.


Delete all: Delete text messages, multimedia messages or all messages.

If you see the message **No space for SIM message**, you should delete some messages from your inbox.

If you see the message **No space for messages**, you can delete either messages or saved files to release space.

Using templates


You can create templates for the **Text** and **Multimedia** messages you send most frequently. There are some templates already on your phone, which can be edit if you wish.

- 1 Press **Menu** or , select **Messages** and choose **Templates**.
- 2 Choose **Text** or **Multimedia**. You can then select **Options** and choose **Edit** to change existing templates, to add **New template** or to **Delete** templates.
- 3 To send a template, select the one you want to send, choose **Options** and select **Send via**.
- 4 Choose how you would like to send the template, as a **Message**, **Bluetooth message** or **Email**.
- 5 Choose a contact and select **Send**.

Changing your text message settings

Your TE365F message settings are pre-defined so that you can send messages immediately.

If you would like to change the settings, you can do this using the **Settings** options.

Press **Menu** or , select **Messages**, then choose **Settings** and **Text message**. You can make changes to:

Message type: Convert your text into Voice, Fax, Paging, X.400, Email or ERMES.

Validity period: Choose how long your message is stored at the message centre.

Delivery report: Choose to receive confirmation that your message was delivered.

Reply charging: Choose to be billed for your message recipient's reply.

Message centre number: Enter the details for your message centre.

Character encoding: Choose how your characters are encoded. This impacts the size of your message and therefore data charges.

Send long text as: Choose whether to send your message as SMS or MMS when you enter a text longer than 2 pages in the message field.


Bearer setting: Choose whether to send your messages via GSM or GPRS.

Messages

Changing your multimedia message settings

Your TE365F message settings are pre-defined so that you can send messages immediately.

If you would like to change the settings, you can do so using the Settings options.

Press **Menu** or , select **Messages**, then choose **Settings** and **Multimedia message**.

You can make changes to:

Slide duration: Choose how long your slides appear on screen.

Priority: Choose the priority level of your multimedia message.

Validity period: Choose how long your message is stored at the message centre.

Delivery report: Choose to request a delivery report and/or allow report.


Read report: Choose to send a read report and/or allow report.

Auto download: Choose to automatically or manually download multimedia messages depending on whether you are at home or roaming.

Network profiles: Select an operator specific network profile for sending multimedia messages.

Permitted message type: Select which type of multimedia messages to allow.

Changing your other settings

Press **Menu** or , select **Messages**, choose **Settings** then:

Voicemail number: Your voicemail number is stored here. Contact your network operators for more information on the service they provide.

Push message: Change your service message settings.

Info message: Choose the topics, reception status, alerts and language of your info messages.

Save text message: Choose whether to save your text messages to the phone memory or to the external memory.

Listen to voicemail

When you receive a voice mail, your phone displays the icon and you hear an alert. Please check with your network providers for details of their service in order to configure the handset correctly.

Messages

Info messages

Info service messages are text messages delivered by the network to GSM. They provide general information such as weather reports, traffic news, taxis, pharmacies, and stock prices.

Each type of info message has a number and you can contact the service provider whenever the specific number is introduced, then the information can be received.


When you have received an info service message, you can see the popup message to show you that you have received a message or the info service message is directly displayed.

When you have received an info service message and select Read to view the message, it will be displayed on the screen.

Tools

MP3 player

Your LG TE365F has a built-in MP3 player so you can play all your favourite music.

To access the MP3 player, press **Menu** or  and select **Tools** then **MP3 player**. From here you have access to:

All songs: Contains all of the songs you have on your phone.

My playlist: Contains any playlists you have created as well as

On the go, Recent songs and **Favourite songs**.

Settings: Adjust your music settings.

Menu 7.1

Transferring music into your phone

The easiest way to transfer music into your phone is via Bluetooth or your sync cable. To transfer using Bluetooth:

- 1 Make sure both devices have Bluetooth switched on and are visible to one another.
- 2 Select the music file on the other device and choose to send it via Bluetooth.
- 3 When the file is sent you will have to accept it on your phone by selecting **Yes**.
- 4 The file should appear in **All songs**.

Tools

Playing a song

- 1 Press **Menu** or  and select **Tools**, then choose **MP3 player**.
- 2 Choose All songs then select the song you want to play. Select .
- 3 Select  to pause the song.
- 4 Select  to skip to the next song.
- 5 Select  to skip to the previous song.
- 6 Select  to stop the music and return to the MP3 player menu.

TIP! To change the volume while listening to music, use the volume keys on the left side of your phone, or the up and down navigation keys.

Using options while playing music

Select **Options** and choose from:

Minimise: Hide the MP3 player screen so that you can continue using your phone as normal while music is playing.

View playlist: Look at the playlist you are currently listening to.

Search: Search for a track from the list of songs on your phone.

Add to playlist: Adds the current track to a playlist.

Set as: Set the current track as your **Ringtone** or **Message tone**.

Information: You can view information about the music file you are listening to.



Settings: Change the Shuffle, Play mode or Equalizer settings.

Creating a playlist

You can create your own playlists by choosing a selection of songs from the **All songs** folder.

- 1 Press  and select **Tools**.
- 2 Choose **MP3 player**, then select **My playlist**.
- 3 Press **New**, enter the playlist name and press **Save**.
- 4 The **New playlist** folder will show. Select all of the songs that you would like to include in your playlist by scrolling to them and selecting .
- 5 Select **Save** to store to the playlist.


Playing a playlist

- 1 Press **Menu** or  and select **Tools**.
- 2 Choose **MP3 player**, then select **My playlist**.
- 3 Select the playlist you would like to play and select **View**, then select .

Editing a playlist

From time to time, you may want to add new songs or delete songs from a playlist.

If you want to organise your playlists, you can edit them using the Options menu.

- 1 Press **Menu** or  and select **Tools**.
- 2 Choose **MP3 player**, then select **My playlist**.

Tools

3 Scroll to the playlist you want to edit and select **View**, then select **Options**. Choose from:

Play: You can play the selected music.

Add: You can add songs to the playlist using this option.

Remove: Remove a song from the playlist. Select **Yes** to confirm.


Move up/down on the playlists.

Multi delete: Select and delete songs from the playlist.

Remove all: Remove all of songs from the playlist.

Information: View the highlight song's information.

Deleting a playlist

1 Press **Menu** or  and select **Tools**.

2 Choose **MP3 player**, then select **My playlist**.

3 Scroll to the playlist you want to delete and select **Options**.

4 Select **Delete all** and select **Yes** to confirm.


Note: As a result of the Digital Rights Management (DRM) system, some of the media items you download from the Internet or receive by MMS may have a "Purchase right" menu to access them. You can acquire the key to purchase the right from the website which owns the right to the contents.

Music is copyright protected in international treaties and national copyright laws. It may be necessary to obtain permission or licence to reproduce or copy music. In some countries national law prohibits private copying of copyrighted material. Please check the national legislation of the applicable country concerning the use of such materials.


Camera


Menu 7.2 Before you've taken your photo


Taking a quick photo


- 1 Hold the camera key down on the left side of the handset. The camera viewfinder will appear on screen.
- 2 Holding the phone horizontally, point the lens towards the subject of the photo.
- 3 Position the phone so you can see the subject of your photo.
- 4 Press  or press the camera key all the way down to take a photo.

Note: You can also access the camera menu from the standby screen. Go to Menu > Tools > Camera. Select Camera to open the viewfinder.


Press  to access these options:


 **Self timer:** The self-timer allows you to set a delay after the capture button is pressed. Choose from Off, 3 seconds, 5 seconds or 10 seconds. Great for that group photo you want to be part of.

 **Multi shot:** This enables you to take up to 9 shots automatically in very quick succession, great for taking photos of moving objects or at sporting events.

 **White balance:** The white balance ensures that any white in your photo is realistic. In order for your camera to correctly adjust the white balance you may need to determine the light conditions. Choose from **Auto, Daylight, Incandescent, Cloudy, Fluorescent** or **Night mode**.

Tools


 **Colour effect:** Choose from four colour tone options: Off (normal/colour), Sepia, Mono (black and white) or Negative.


 **EV:** Turn macro mode on if you are taking a picture very close to the image subject.


After you've taken your photo


Your captured photo will appear on the screen. The name of the image runs along the bottom of the screen and you will see six options displayed on the left side of the screen.

OK: Select to take another photo straight away. Your current photo will be saved.

 **New image:** Take another photo straightaway. Your current photo will be saved.

 **Set as:** Select to open a sub menu to set your image as **Wallpaper** or **Picture ID**.

 **Send via:** Select to send the photo as a **Multimedia message** or **Online Album**. See page 36 for **Sending a message**.

 **Album:** Select to look at the other photos in your album. Your current photo will be saved. See page 31 for **Viewing your saved photos**.

Delete: Delete the photo you have just taken and confirm by selecting **Yes**. The viewfinder will reappear.

Using the quick settings

Select Options to access the quick settings options. These include various options for taking photos.

Video camera: Convert from camera mode to video camera mode.

Display: Choose Standard or Clean mode.

Resolution: Choose one from 320*240, 640*480, 1280*960, and 1600*1200.

Quality: Choose between **Normal**, **Fine** and **Super fine**. The finer the quality, the sharper a photo will be. The file size will increase as a result, which means you will be able to store fewer photos in your memory.

Shutter tone: Select one of the three shutter sounds. (active only in Camera mode)

Save to: Choose whether to save your photos to the phone memory or to the external memory.

Reset settings: Choose **Yes** to reset your phone to the original camera settings.

Changing the image size

You can change the size of the photo to save memory space. The more pixels, the larger the file size, which in turn means they take up more of your memory. If you want to fit more pictures on your phone you can alter the pixel number to make the file size smaller.

- 1 Press **Options** and select **Resolution** from the toolbar.
- 2 Select a pixel value from the four numerical options (320x240, 640x480, 1280x960, 1600x1200).
- 3 Press **OK** to implement your changes.

Tools

Viewing your saved photos

- 1 You can access your saved photos from within the camera mode and from the standby screen. From the viewfinder, simply press **Album**. From the standby screen you should press **Menu** or , then select **Media** and **Images**.
- 2 Your gallery will appear on screen.
- 3 Use the navigation keys to select the photo you want to view and select **View** to enlarge it.


Setting a photo as Wallpaper or Picture ID

From your image Album, use the navigation keys to select an image and choose **Options** and **Set as** to use the selected image as **Wallpaper** or **Picture ID** for one of your contacts. When you set the photo as Picture ID you can choose which part of the photo to use.

Note: Picture ID can only be added to contacts which saved to your phone, not your SIM.

Shooting a quick video


- 1 Quickly press the camera key on the left side of the handset.
- 2 Choose **Video camera**.
- 3 Point the camera lens towards the subject of the video.
- 4 Press the camera key on the left side of the handset to start recording.
- 5 **REC** will appear in the bottom right corner of the viewfinder and a timer will show the length of your video.
- 6 To pause the video select **Pause** and resume by selecting **Resume**.
- 7 Select **Stop** to stop recording.


Note: You can also access the **Video camera** from the standby screen. Press  and select **Tools > Camera**, scroll down and select **Video camera** to open the viewfinder.


After you've shot your video


The name of the video runs along the bottom of the screen and six options will be displayed on the left side of the screen.

OK: Select to record another video straight away. Your current video will be saved.

 **New video:** Select to shoot another video straight away. Your current video will be saved.

 **Play:** Select to play the video you have just recorded.

 **Send via:** Select to send the video as a **Send via Multimedia message** or **Online Album**. See page 36 for **Sending a message**.

 **Album:** Select to look at the other video clips in your album. Your current video clip will be saved. See page 31 for **Watching your saved videos**.

Delete: Delete the video you have just recorded and confirm by selecting Yes. The viewfinder will reappear.

Getting to know the viewfinder

Note: You can adjust the zoom using the volume keys on the left side of the phone.

Using the quick settings

Select Options to access the quick settings options. These include various options for recording videos.

Camera: Convert from video camera mode to still camera mode.

Display: Choose Standard or Clean mode.

Tools


Resolution: If you want to fit more videos on your phone you can alter the pixel number to make the file size smaller. Choose between two options for your video, 176x144, 320x240.


Quality: Super fine/ Fine/ Normal.

Save to: Choose whether to save your video clip to the phone memory or to an external memory.

Reset settings: Choose **Yes** to reset your phone to the original video camera settings.

Watching your saved videos

- 1 You can access your saved videos either from within video camera mode or from the standby screen. From the viewfinder select **Album**. From the standby screen you should press **Menu** or , then select **Media** and **Videos**.
- 2 Your gallery will appear on screen.

- 3 Use the navigation keys to select the video you want to view and press  to watch it.

Adjusting the volume when viewing a video

To adjust the volume of the audio on a video when it is playing, use the volume keys on the left side of the handset. The volume level is shown below the video, on the left hand side.

Camera Album

You can view the images that are captured from Camera mode, using the options View/Delete/Set as/Send via/Slide show/Multi delete/Delete all/Sort by/View mode/Information.

FM radio

Menu 7.3

Using the FM radio

Your LG TE365F has an FM radio feature so you can tune in to your favourite stations to listen on the move.

Note: You need to insert your headset in order to listen to the radio. Insert the plug into the headset socket (this is the same socket that you plug your charger).



Voice recorder


Menu 7.4

Using the voice recorder

Use your Voice recorder to record voice memos or other sounds.

Recording your voice memo

- 1 Press **Menu** or  and select **Tools**, then choose **Voice recorder**.
- 2 Press  to begin recording.

- 3 Select **Pause** to pause the recording.
 - 4 Select **Stop** to end the recording.
 - 5 Select  to listen to the recording.
- Note:** You can listen to all of the voice recordings you have saved by selecting **Album**.

Sending a voice recording


- 1 Once you have finished recording, select **Options**.
- 2 Select **Send via** and choose from **Multimedia message** or **Bluetooth**. If you choose **Message**, the recording will be added to the message and you can write and send it as normal. If you choose **Bluetooth**, you will be prompted to turn Bluetooth on.

Tools

TIP! If you plan to send your recording as a message, before you start recording, select **Options**, select **Recording mode** and choose **MMS**. This will ensure that the recording fits into a message.

Alarm clock

Menu 7.5

- 1 From the standby screen press **Menu** or , and select **Tools**, then **Alarm clock**.
- 2 Select **New**.
- 3 Scroll down and enter the time you would like the alarm to sound at.
- 4 Choose the repeat type to indicate whether you would like your alarm to sound **Once**, **Daily**, **Mon - Fri**, **Mon - Sat**, **Sat - Sun**, or **Choose weekday**.


- 5 Scroll down and choose whether you would like the alarm to **Always sound**, **Always vibrate** or **Follow profile**.
- 6 Scroll down to choose the alarm tone. Choose **Sounds** to select a new sound.
- 7 Scroll down and enter a name for the alarm or keep the suggested name.

- 8 Select **Save**.

Note: You can set up to 5 alarms.

Calendar

Menu 7.6

- 1 From the standby screen press **Menu** or , and select **Tools**, then **Calendar**.
- 2 Select the event you would like to share and choose **Options**.

The following [Options] are available when a Calendar event is selected from the Calendar menu.

Edit: Allows you to edit the schedules.

Delete: Allows you to delete the selected schedule.

New schedule: Allows you to make new schedule.

Send via: Send through Text message, Multimedia message or Bluetooth.

Calendar: Back to the calendar menu.

Scheduler tone: Choose the schedule alarming tone.

All schedules: Shows you all the schedules set on.

Go to date: Allows you to jump to specific date.


Multi delete: You can delete all the chosen items at once.

Delete old: Deletes the old schedules.

Delete all: Deletes all the schedules.

Memo

Menu 7.7


- 1 From the standby screen press **Menu** or , and select **Tools**, then **Memo**.
- 2 Select **New** and type your memo.
- 3 Select **Options** then **Save**.
- 4 Your memo will appear on screen the next time you open the memo application.

TIP! You can edit an existing memo. Select the one you want to edit, press Options and select Edit.

Tools


Calculator

Menu 7.8

- 1 From the standby screen press **Menu** or , and select **Tools**, then **Calculator**.
- 2 Press the numeric keys to input numbers.
- 3 For simple calculations, select the **function** you require (+, -, x, ÷), followed by =.
- 4 For more complex calculations, select **Function** to select a command.
- 5 Select **Clear** to clear the screen and start a new calculation.


Stopwatch

Menu 7.9

- 1 From the standby screen press **Menu** or , and select **Tools**, then **Stopwatch**.
- 2 Select **Start** to begin the timer. Choose **Lap** if want to record a lap time. Up to 20 lap times can be saved.
- 4 Select **Stop** to end the timer.
- 5 Choose **Resume** to restart the stopwatch at the time you stopped it at or select **Reset** to return to zero.


Unit converter

Menu 7.0

- 1 From the standby screen press **Menu** or , and select **Tools**, then **Unit converter**.
- 2 Choose whether you would like to convert **Currency, Area, Length, Weight, Temperature, Volume** or **Velocity**.
- 3 Scroll up to choose from the unit of measurement you want to enter. Scroll left and right to select a unit, then scroll down and enter the unit quantity.
- 4 Scroll down to the unit conversion box and choose the unit measurement you want to convert into. The conversion will show automatically in the line below.

World clock

Menu 7.*

- 1 From the standby screen press **Menu** or , and select **Tools**, then **World clock**.
- 2 Scroll up, down, left or right to navigate the globe and choose a continent.
- 3 Select **Zoom in** to zoom into an area and choose from the cities in that area.
- 4 Press **Set**.

Contacts

Search

Menu 8.1

Instant searching is available by inputting the initial letter of the name. Enter the name that you want to search.

New contact

Menu 8.2

This menu allows you to add a new contact address. You can enter contact address information including name, phone numbers, email addresses, group information items, memos, ring tones and images (photographs).

Speed dials

Menu 8.3

This menu allows you to configure the speed dial numbers. You can select a number from 2 to 9 as a speed dial. You can configure speed dial numbers for any of the 8 numbers for a specific contact address so that a contact address may have multiple speed dial numbers.

Groups

Menu 8.4

This menu allows you to manage group information. By default, there are 7 groups: Family, Friends, Colleague, VIP, Group1, Group2 and No group. You can also configure a ring tone for a group so that the group ring tone sounds when a call from a specific contact address within that group is received and there is no ring tone configured for the specific contact address.

Copy all

Menu 8.5

You can copy entries from SIM card memory to Phone memory and vice versa.

SIM to phone: You can copy the entry from SIM Card to Phone memory.

Phone to SIM: You can copy the entry from Phone memory to SIM Card.

Delete all

Menu 8.6

You can delete all entries from SIM or Phone.

Settings

Menu 8.7

View options

Name and number: Set the phonebook list with displaying name and number.

With picture: Set the phonebook list with the information of character and picture.

Information

Menu 8.8

Service dial numbers: Use this function to access a particular list of services provided by your network operator (if supported by the SIM card).

Own number (Depending on the SIM): You can save and check your own number in SIM card.


Business card: This option allows you to create your own business card featuring Name and a mobile phone number.

Settings

Within this folder you can adapt your settings to make your TE365F personal to you.


Note: For information on call settings see page 20.

Changing your profiles

You can quickly change your profile from the standby screen. Simply press  using the navigation keys then the profile you would like to activate. Choose from **General**, **Silent**, **Vibrate only**, **Outdoor** and **Headset**.

Personalizing your profiles


You can personalise each profile setting.

- 1 Press **Menu** or  and select **Settings** and then **Profile**.
- 2 Choose the profile you want and select **Personalize**.

- 3 For the **Silent** and **Vibrate only** profiles, you can adapt the vibration. For the other profiles, you can change all of the sounds and alert options available in the list.

Changing your date & time

You can set functions relating to the date and time.

- 1 Press **Menu** or  and select **Settings**.
- 2 Select **Date & Time** and choose from the list below:

Set date: You can enter the current date.

Date format: You can set the date format. (YYYY/MM/DD, DD/MM/YYYY, MM/DD/YYYY)

Set time: You can enter the current time.


Time format: You can set the time format to either 24 hours or 12 hours.

Auto update: Select **On**, the phone will automatically update the date and time.

Changing the language

Select Languages to change the language for any text in your phone. Any change will also alter the language input mode.

Changing your display settings

1 Press Menu or  and select Settings.

2 Select Display and choose from:

Wallpaper: Choose a wallpaper to appear on your screen display.

Clocks: Choose to have the time and date visible on your standby screen. Choose from **No date & time** or **Normal**.

Backlight timer: Choose how long the backlight remains on.

TIP! The longer the backlight is on, the more battery power is used, and you may need to charge your phone more often.

Brightness: Use the navigation keys to adjust the brightness. Choose from 40%, 60%, 80% or 100%, then select OK to save your change.

Shortcut: Allows you to set navigation keys as you like.

Home screen shortcut: Select On to display the shortcuts of 4 menus as pictures on the middle of the standby screen.

Font size: Change the font size of the following: **Menu, Dialing** and **Messaging**.

Theme: Quickly change the whole look of your screen.

Menu style: Change the menu view from **Grid view** to **List view**.

Settings


Main font style: Adjust the font type.

Dialing font style: Adjust the font style for when you are dialing a phone number.

Standby text: Choose to add a message to your standby screen.

Changing your connectivity settings

Your connectivity settings have already been set up by your network operator, so you can start your new phone from the off. If you want to change any settings, use this menu.


Press **Menu > Settings** and  and select **Connectivity**. Your options are:

Bluetooth: Set up your TE365F for Bluetooth use. You can adapt your visibility to other devices or search through devices your phone is paired with.

Network: Your TE365F connects automatically to your preferred network. To change these settings by using this menu. You can also add new access points by using this menu.

USB connection: Choose **Data service** and synchronise your TE365F using the LG PC Suite software to copy files from your phone. If you have a memory card inserted, select **Mass storage** to use your phone in the same way as you would use a USB stick. Connect to your computer and drag and drop files to the TE365F removable device folder.

Changing your Bluetooth settings

- 1 Press **Menu** or  and select **Connectivity**, then choose **Bluetooth**.
- 2 Choose **Bluetooth settings**.
Make your changes to:


My visibility: Choose whether to Show or Hide your device to others.

My name: Enter a name for your LG TE365F.

My address: View your Bluetooth address.

Changing your security settings

Change your security settings to keep your TE365F and the important information it holds protected.

- 1 Press **Menu** or  and select **Settings**.
- 2 Select **Security** and choose from the list below:

PIN code request: Choose a PIN code to be requested when you turn your phone on.

Auto key lock: Choose how long before the keypad locks when the phone is not in use.

Phone lock: Choose a security code to lock your phone **When power on, When SIM changed or Immediately**.

Change codes: Change your **Security code, PIN1 code or PIN2 code**.

Using flight mode

Use this function to switch the flight mode **On** or **Off**. You will not be able to make calls, connect to the internet, send messages when **Flight mode** is switched **On**.

Using power save

Choose to switch the power saving settings Always on, Night only and Off.

Resetting your phone


Use **Reset** in **Phone settings** to reset all the settings to the factory definitions. You need the security code to activate this function.

Settings

Viewing memory status

Your TE365F has three memories available: the phone, the SIM card and an external memory card (you may need to purchase the memory card separately).

You can use the memory manager to determine how each memory is used and see how much space is available.

Press **Menu** or  and select **Settings**. Choose Memory status and you will then see the current status of the memories (Common, Reserved, SIM card and External memory) in your TE365F.

TIP! See page 17 for information on inserting a memory card.

Phone Information

It shows the phone information such as My Number, Manufacturer, Model Name, Device ID, Hardware Version, Software Version and Language.

Pairing with another Bluetooth device

By pairing your TE365F and another device, you can set up a passcode protected connection. This means your pairing is more secure.

- 1 Check your Bluetooth is **On** and **Visible**. You can change your visibility in the **Bluetooth settings** menu, by selecting **My visibility**, then **Show**.
- 2 Select **Device list** from the Bluetooth menu and choose **New**.
- 3 Your TE365F will search for devices. When the search is completed **Pair** and **Refresh** will appear on screen.


- 4 Choose the device you want to pair with, select **Pair** and enter a passcode then choose **OK**.
- 5 Your phone will then connect to the other device, on which you should enter the same passcode.
- 6 Your passcode protected Bluetooth connection is now ready.

Using a Bluetooth headset

- 1 Check your Bluetooth is **On** and **Visible**.
- 2 Follow the instructions that came with your headset to place it in pairing mode and pair your devices.
- 3 Your TE365F will then automatically connect to your Bluetooth headset and switch to headset profile.

Using your phone as a mass storage device

Your TE365F can be used as a mass storage device, just like a USB memory stick. This is a great way of moving your files from your computer to your phone. If you've inserted a memory card, when connecting as **Mass storage**, the phone will be displayed as two drives on your computer: the handset memory and external memory.

- 1 Press **Menu** or  select **Settings** and then **Connectivity**.
- 2 Select **USB Connection**.
- 3 Scroll to Mass storage and select **OK**.

Settings

- 4 Insert the smaller end of the USB cable into the USB cable connector on the edge of the TE365F. Plug the larger end into the USB port of your computer.
- 5 A removable disk folder will open automatically on your computer, two disk folders if you have a memory card inserted, showing all the folders on your phone or memory card.
- 6 Drag and drop your images, videos, music or documents into the removable disk folders.
- 7 Safely remove your phone by clicking on the **Safely remove hardware** icon in your desktop toolbar.
- 8 When you want to then access a file, for example an image, press **Menu** or , then select **Media** followed by **External memory** then **Images**. All the images you transfer will be contained in this file.

Transferring a file to your phone

You can also transfer files from your computer to your phone using Bluetooth.

- 1 Make sure your phone and computer have Bluetooth switched on and are visible to one to another.
- 2 Use your computer to send the file via Bluetooth.
- 3 When the file is sent you will have to accept it on your phone by selecting **Yes**.
- 4 The file will be saved within the appropriate folder depending on type. For example, photographs will be saved in the **Images** folder and music in the **Sounds** folder. If your phone cannot identify the file type, the file will be saved in the **Others** folder.

Note: Files sent using Bluetooth will be saved to the phone memory.


Sending and receiving your files using Bluetooth

Bluetooth is a great way to send and receive files as no wires are needed and connection is quick and easy.

You can also connect to a Bluetooth headset to dial and receive calls.

Before you start sharing files using Bluetooth, you will need to pair your phone with another Bluetooth device. For information on pairing devices, see **Pairing with another Bluetooth device** on page 66.

To switch Bluetooth on:

- 1 Press **Menu** or  and select **Connectivity**, then choose **Bluetooth**.
- 2 Select **Bluetooth on/off** and choose **On**.
- 3 Select **Off** to switch Bluetooth off.

To send a file:

- 1 Open the file you want to send, typically this will be a photo, video or music file.
- 2 Select **Options** and choose **Send via**, then **Bluetooth**.
- 3 Select **Yes** to turn Bluetooth on if it is not already activated.
- 4 Your TE365F will automatically search for other Bluetooth enabled devices within a range.
- 5 Choose the device you want to send the file and select **Send**.

Settings

To receive a file:

- 1 To receive files, your Bluetooth must be both **On** and **Visible**. See **Changing your Bluetooth settings** on page 64 for more information.
- 2 A message will prompt you to accept the file from the sender. Select **Yes** to receive the file.

TIP! Keep eyes on the progress bar to make sure your file is sent.

Note: The Bluetooth® word mark and logos are owned by the Bluetooth SIG, Inc. and any use of such marks by LG Electronics is under licence. Other trademarks and trade names are those of their respective owners.

Changing the call settings

- 1 Press Menu or, select Settings and choose Call.
- 2 From here you can amend the settings for:

Call forwarding: Choose whether to divert your calls.

Call barring: Select which calls you would like to be barred.

Fixed dial number: Choose a list of numbers that can be called from your phone.

Answer mode: Choose whether to answer the phone using only the accept key, any key or by sliding your handset open.

Send my number: Choose whether your number will be displayed when you call someone.

Call waiting: Be alerted when you have a call waiting.

Minute minder: Select On to hear a tone every minute during a call.

Auto redial: Choose that the phone will automatically try to redial in the case of failure to connect a call.

Send DTMF Tones: Select from On and Off.

Fido IM

The Instant Messages feature can only be used with the support of the network operator or communities such as Windows Live and Yahoo! Messenger. For Instant Messages users, a valid User ID and Password will be required in order to login and exchange messages as well as checking the online status. The menu items below might not appear since not all IM communities support the various options. Also the menu strings may appear differently based on the selected IM communities. The keywords such as User ID, Login and Contact will be used as general terms in IM menus according to the currently selected communities such as Windows Live and Yahoo! Messenger.

Offline Menu

Sign in

This allows users to login by filling in the User ID and Password.

Note: Once the User ID and Password are saved, you will not be required to type them in again during Login process. This feature is an optional.

Saved Conversations

This is where a user can view saved conversations.

Change Provider: You can change the provider.

Settings

Set Sound: Allows you to set on/off an alert for the Contact when they have an activity on their session.

Default Provider: Allows you to set the default IM community to login.

Fido IM

Auto Sign In: You may set the automatic IM Login process by choosing between the 'When power on' or 'When IM start' options.

Network: You may check your IM Network Profiles or Server Address information.

IM Information

This indicates the Instant Messages Client Information such as Client Name and Version Number.

Online Menu / 1 to 1 conversation

After a successful Login, a list of contacts with Screen Names will be appeared on screen. Depending on the cursor location in the contacts, the following menu options will be available.

When cursor is located on a Conversations List

Note: The Conversations List contains both the active contact where a conversation has taken place as well as an unknown contact.

When you select on the Conversation List, it offers the ability to view or hide conversations.

Send Message to...: This offers the ability to send a message to an unknown contact. When selected, a User ID must be typed in prior to starting an IM session or conversation.

Saved Conversations: You may view or delete the stored conversation session.

Settings

- **Display Name**
- **My Status:** Allows you to set your status to Busy, Be Right Back, Away, On The Phone, Out To Lunch or Appear Offline.
- **Set Sound:** Allows you to set an alert for the Contact when they have the activity on their session.
- **Auto Sign In:** You may Login to an IM client automatically with the 'When power on' or 'When IM start' options.
- **Default Provider:** Allows you to set the default IM community to login.
- **Sign Out:** This begins the Logout process.

When cursor is located on a Conversation

End Conversation: This closes the selected conversation. If an unknown contact was selected, that contact is deleted.

Block/Unblock Contact: This allows you to block/unblock the selected Conversations Contact.

Contact Info: This allows you to view the User ID and Status Text information.

Refresh contact: This refreshes the present information on the contacts within the contacts.

Settings: Please refer to the previous Settings Menu.

Minimize: Minimize the active window.

Sign Out: This begins the Logout process.

Fido IM

When cursor is located on a Contact List

Add Contact: This adds a new contact to the selected contacts' list; in the meantime this searches for the contact on the basis of E-mail Address, First Name, or Last Name.

Refresh Contact List: This refreshes the present information on the contacts within the contacts.

Send Message to...: This offers the ability to send a message to an unknown contact. When selected, the User ID must be typed in prior to starting an IM session or conversation.

Saved Conversations: This is where a user can view saved conversations.

Settings: Please refer to the previous Settings Menu.

Minimize: Minimize the active window.

Sign Out: This begins the Logout process.

When cursor is located on a Contact

Add Contact: This adds a new contact to the selected contacts list; in the meantime this searches for the contact on the basis of E-mail Address, First Name, or Last Name.

Delete Contact: This deletes the selected Contact.

Block/Unblock Contact: This allows or blocks conversation with the selected Contact.

Refresh Contact List: This refreshes the present information on the selected contact.

Contact Info: This allows you to view information. It provides User ID, Status Text.

Blocked List

Settings: Please refer to the previous Settings Menu.

Minimize: Minimize the active window.

Sign Out: This begins the Logout process.

Menu options available in the Conversation screen

Back To Contacts: This brings the screen back to the contacts.

Insert: You can insert Symbol, Template and Emoticons in the conversation screen.

Block/Unblock Contact: This allows or blocks conversation with the selected Contact.

Save Conversation: Stores the currently active conversation.

End Conversation: This ends the active conversation and clears the conversation buffer.

Settings: Please refer to the previous Settings Menu.

Text Entry Mode: Sets the text input mode such as abc, Abc, ABC and 123.

Note:

- Maximum number of characters supported by a message is 800 characters for receiving and 127 characters for sending.
- The present information might not update in real time so the “Refresh List”/“Refresh Contact” option can be used for the most up to date status.

MobileMail

Mobile Email allows you to access Fido Yahoo! / Yahoo! Mail / Windows Live Hotmail and Other providers accounts on your phone. So, now you can quickly and easily check your email while you are away from your computer.


To Set Up Mobile Email

Open Mobile Email: From the Standby screen, press the left soft key or press ok key. Then, choose **MobileMail**.

Select an Email Provider: Use the navigation key to highlight the email provider you wish to use and press Select.

Log In

- 1 Type your existing email ID into ID entry field.
- 2 Then, enter your password into the Password field.

Quick Tip: Your password is case sensitive. Press the  button on the keypad to change to lower case or upper case.

3 Select Sign In.

Opening an Email: Just scroll down and highlight the email subject line you want to open and press OK key. When the email is open, select Options to Reply, Delete, Reply to All, Forward, View All Recipients or Mark Unread.

Deleting an Email: Scroll down to the email you want to delete, press Options, then Delete.


Communities

The Friends link is the one place to stay connected to all your online communities through your phone. Easily access Facebook, MySpace, Yahoo! and Windows Live.

PC Sync

You can synchronise your PC with your phone to make sure all your important details and dates match, and also as a backup to put your mind at ease.

Installing LG PC Suite on your computer

- 1 From the standby screen press  and choose **Settings**.
- 2 Select **Connection**, then select **USB connection mode**.
Music: Music Sync mode.
Others: Data Service mode.
- 3 Insert the supplied CD into your PC. Click on the **LG PC Suite Installer** which will appear on your screen.
- 4 Select the language you would like the installer to run in and click **LG PC Suite**.

- 5 Follow the instructions on the screen to complete the **LG PC Suite Installer wizard**.
- 6 Once installation is complete, the **LG PC Suite icon** will appear on your desktop.

Connecting your phone and PC

- 1 Connect the USB cable to your phone and your PC.
- 2 Double click on the **LG PC Suite Icon** on your desktop.
- 3 Click on **Connection Wizard** and **USB**.
- 4 Click on **Next**, then **Next** again, and **Finish**. Your phone and PC are now connected.

Viewing your phone files on your PC

- 1 Connect your phone to your PC as outlined above.
- 2 Click on the **Contents** icon.
- 3 All of the videos, audios and graphics you have saved onto your phone will be displayed on the screen in the LG Phone folder.

TIP! Viewing the contents of your phone on your PC helps you to arrange files, remove contents you no longer need.

Synchronising your contacts

- 1 Connect your phone to your PC.
- 2 Click on the **Contacts** icon.
- 3 Select **To Phone**. Your PC will export your changes to your handset.
- 4 Click on **File** and select **Save**. You can now select where you would like to save your contacts to.

Note: To backup contacts saved to your USIM card, click on the SIM card folder on the left side of your PC screen. Right-click your contact then **Select all**. Right-click your contact again and select **Copy to Phone Memory**. Now click on the Handset folder on the left of your screen and all your numbers will be displayed.

PC Sync

Synchronising your messages

- 1 Insert MicroSD card and connect your phone to your PC.
- 2 Click on the **Messages** icon.
- 3 All of your PC and phone messages will be displayed in folders on your screen.
- 4 Use the tool bar at the top of your screen to edit and rearrange messages.

Synchronising your music


- 1 Connect your phone to your PC.
- 2 Click on the **Music** icon.
- 3 The music files you have saved will be displayed on the screen in the Music folder.

Note: The following conditions must be met.

- Microsoft Windows XP or Vista.
- Windows Media Player 11 or higher.
- USB Connection mode should be active and Music Sync mode should be on.

Using your phone as a mass storage device

Your phone can only be used as a mass storage device if you have a memory card inserted.

- 1 Disconnect your phone from your PC.
- 2 From the standby screen, press  and choose **Settings**.
- 3 Select **Connection**, then select **USB connection mode**.
- 4 Highlight **Mass storage** and press **Set**.

- 5 Connect your phone to your PC. Your phone will read: **Connecting as Mass Storage...** followed by **Connected as Mass Storage Mode**. Do not disconnect during transfer.
- 6 All of your phone files will automatically be stored onto your PC hard drive.

Note: Your phone must be unplugged from your PC to initiate Mass Storage.

Note: Mass storage backs up content saved on your memory card only, not your handset memory. To transfer the contents of your handset memory (e.g. contacts) you'll need to synchronise using PC Sync.

Accessories

There are a variety of accessories available for your mobile phone, some of which may be sold separately. You can select these options according to your personal communication requirements. Consult your local dealer for availability.

Travel Adapter

This adapter allows you to charge the battery. It supports standard US 120 Volt 60Hz outlets.



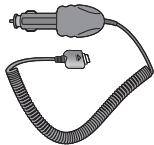
Battery

Standard battery is available.



Vehicle Power Adapter

Allows hands-free operation. Includes earpiece and microphone.



Data cable and CD

Connect and synchronise your TE365F and PC.



Note:

- Always use genuine LG accessories. Failure to do this may invalidate your warranty.
- Accessories may be different in different regions; please check with our regional service company or agent for further enquiries.

Trouble Shooting

This chapter lists some problems that you might encounter while using your phone. Some problems require that you call your service provider, but most of problems you encounter are easy to correct yourself.

Message	Possible causes	Possible Corrective measures
SIM error	There is no SIM card in the phone or you may have inserted it incorrectly.	Make sure that the SIM card is correctly inserted.
No connection to the network	Signal weak Outside GSM network	Move higher to a window or open space. Check service provider coverage map.
Codes do not match	When you want to change a security code you have to confirm the new code by entering it again. The two codes that you have entered do not match.	Contact your Service Provider.
Function cannot be set	Not supported by Service Provider or registration required	Contact your Service Provider.
Calls not available	Dialling error New SIM card inserted Charge limit reached	New network not authorised. Check for new restrictions. Contact Service Provider or reset limit with PIN 2.

Message	Possible causes	Possible Corrective measures
Phone cannot be switched on	On/Off key pressed too briefly	Press On/Off key for at least two seconds.
	Battery empty	Charge battery. Check charging indicator in the display.
	Battery contacts dirty	Clean contacts.
Charging error	Battery totally empty	Charge battery.
	Temperature out of range	Make sure the ambient temperature is right, wait for a while, and then charge again.
	Contact problem	Check power supply and connection to the phone. Check the battery contacts, clean them if necessary.
	No mains voltage	Plug in to a different socket or check voltage.
	Charger defective	If the charger does not warm up, replace it.
Phone loses network	Wrong charger	Only use original LG accessories.
	Battery defective	Replace battery.
Phone loses network	Signal too weak	Reconnection to another service provider is automatic.
Number not permitted	The Fixed dial number function is on.	Check settings.